

Product datasheet for **TA325844**

Glucose Transporter GLUT3 (SLC2A3) Rabbit Polyclonal Antibody

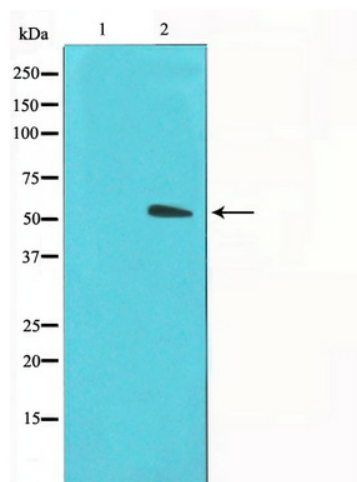
Product data:

Product Type:	Primary Antibodies
Applications:	WB
Recommended Dilution:	WB: 1:500-1:2000
Reactivity:	Human
Host:	Rabbit
Isotype:	IgG
Clonality:	Polyclonal
Immunogen:	The antiserum was produced against a synthesized A synthesized peptide derived from human GLUT3.
Formulation:	Rabbit IgG in phosphate buffered saline , pH 7.4, 150mM NaCl, 0.02% sodium azide and 50% glycerol.
Concentration:	lot specific
Purification:	The antibody was affinity-purified from rabbit antiserum by affinity-chromatography using epitope-specific peptide.
Conjugation:	Unconjugated
Storage:	Store at -20°C as received.
Stability:	Stable for 12 months from date of receipt.
Gene Name:	solute carrier family 2 member 3
Database Link:	NP_008862 Entrez Gene 6515 Human P11169
Background:	GLUT3 an integral membrane facilitative glucose transporter. One of 13 members of the human equilibrative glucose transport protein family. It's surface expression is induced by insulin. It is restricted in humans to brain, testis (in the spermatozoa), and skeletal muscle, mostly in triads of slow-twitch fibres. Detected only in the brain of mouse and rat.
Synonyms:	GLUT3
Protein Families:	Transmembrane



[View online »](#)

Product images:



Western blot analysis on LOVO cell lysate using GLUT3 Antibody