

Product datasheet for **TA325842**

SIRT1 Rabbit Polyclonal Antibody

Product data:

Product Type:	Primary Antibodies
Applications:	WB
Recommended Dilution:	WB: 1:500-1:2000
Reactivity:	Human, Mouse
Modifications:	Phospho-specific
Host:	Rabbit
Isotype:	IgG
Clonality:	Polyclonal
Immunogen:	The antiserum was produced against A synthesized peptide derived from human SirT1 around the phosphorylation site of Serine 47
Formulation:	Rabbit IgG in phosphate buffered saline , pH 7.4, 150mM NaCl, 0.02% sodium azide and 50% glycerol.
Concentration:	lot specific
Purification:	The antibody was affinity-purified from rabbit antiserum by affinity-chromatography using epitope-specific peptide.
Conjugation:	Unconjugated
Storage:	Store at -20°C as received.
Stability:	Stable for 12 months from date of receipt.
Predicted Protein Size:	110 kDa
Gene Name:	sirtuin 1
Database Link:	NP_001135970 Entrez Gene 93759 Mouse Entrez Gene 23411 Human Q96EB6
Background:	This gene encodes a member of the sirtuin family of proteins, homologs to the yeast Sir2 protein. Members of the sirtuin family are characterized by a sirtuin core domain and grouped into four classes. The functions of human sirtuins have not yet been determined; however, yeast sirtuin proteins are known to regulate epigenetic gene silencing and suppress recombination of rDNA.

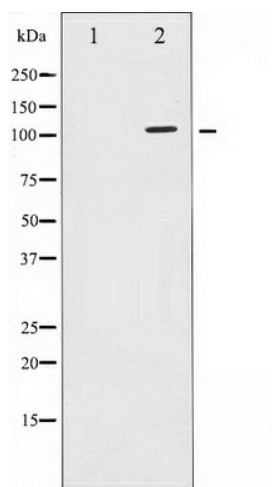


[View online »](#)

Synonyms: SIR2; SIR2alpha; SIR2L1

Protein Families: Druggable Genome, Stem cell - Pluripotency, Transcription Factors

Product images:



Western blot analysis of SirT1 phosphorylation expression in JK whole cell lysates, The lane on the left is treated with the antigen-specific peptide.