

Product datasheet for **TA325836**

SGK1 Rabbit Polyclonal Antibody

Product data:

Product Type:	Primary Antibodies
Applications:	WB
Recommended Dilution:	WB: 1:500-1:2000; IHC: 1:50-1:200
Reactivity:	Human, Mouse, Rat
Modifications:	Phospho-specific
Host:	Rabbit
Isotype:	IgG
Clonality:	Polyclonal
Immunogen:	The antiserum was produced against A synthesized peptide derived from human SGK around the phosphorylation site of Serine 422
Formulation:	Rabbit IgG in phosphate buffered saline , pH 7.4, 150mM NaCl, 0.02% sodium azide and 50% glycerol.
Concentration:	lot specific
Purification:	The antibody was affinity-purified from rabbit antiserum by affinity-chromatography using epitope-specific peptide.
Conjugation:	Unconjugated
Storage:	Store at -20°C as received.
Stability:	Stable for 12 months from date of receipt.
Predicted Protein Size:	54 kDa
Gene Name:	serum/glucocorticoid regulated kinase 1
Database Link:	NP_001137148 Entrez Gene 20393 Mouse Entrez Gene 29517 Rat Entrez Gene 6446 Human O00141
Background:	This gene encodes a serine/threonine protein kinase that is highly similar to the rat serum- and glucocorticoid-induced protein kinase (SGK). This gene was identified in a screen of hepatocellular genes regulated in response to cellular hydration or swelling. Cellular hydration is a catabolic signal, stimulating glycogenolysis and proteolysis, and inhibiting protein and glycogen synthesis.

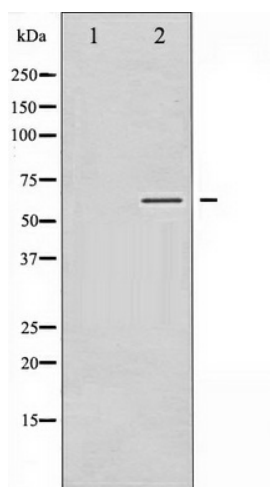


[View online »](#)

Synonyms: SGK

Protein Families: Druggable Genome, Protein Kinase

Product images:



Western blot analysis of SGK phosphorylation expression in Insulin treated HeLa whole cell lysates, The lane on the left is treated with the antigen-specific peptide.