

Product datasheet for **TA325832**

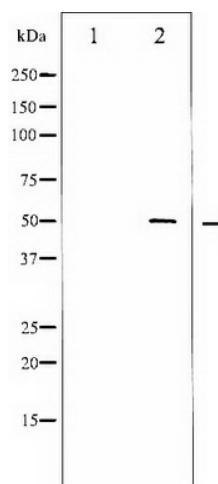
RUNX1 Rabbit Polyclonal Antibody

Product data:

Product Type:	Primary Antibodies
Applications:	WB
Recommended Dilution:	WB: 1:500-1:2000; IHC: 1:50-1:200; IF/ICC: 1:100-1:500
Reactivity:	Human, Mouse, Rat
Host:	Rabbit
Isotype:	IgG
Clonality:	Polyclonal
Immunogen:	The antiserum was produced against A synthesized peptide derived from human AML1
Formulation:	Rabbit IgG in phosphate buffered saline , pH 7.4, 150mM NaCl, 0.02% sodium azide and 50% glycerol.
Concentration:	lot specific
Purification:	The antibody was affinity-purified from rabbit antiserum by affinity-chromatography using epitope-specific peptide.
Conjugation:	Unconjugated
Storage:	Store at -20°C as received.
Stability:	Stable for 12 months from date of receipt.
Predicted Protein Size:	50 kDa
Gene Name:	runt related transcription factor 1
Database Link:	NP_001001890 Entrez Gene 12394 Mouse Entrez Gene 50662 Rat Entrez Gene 861 Human Q01196
Background:	Core binding factor (CBF) is a heterodimeric transcription factor that binds to the core element of many enhancers and promoters.
Synonyms:	AML1; AML1-EVI-1; AMLCR1; CBFA2; EVI-1; PEBP2aB
Protein Families:	Druggable Genome, ES Cell Differentiation/IPS, Transcription Factors
Protein Pathways:	Acute myeloid leukemia, Chronic myeloid leukemia, Pathways in cancer



[View online »](#)

Product images:

Western blot analysis of AML1 expression in Jurkat whole cell lysates, The lane on the left is treated with the antigen-specific peptide.