

Product datasheet for **TA325823**

MSK1 (RPS6KA5) Rabbit Polyclonal Antibody

Product data:

Product Type:	Primary Antibodies
Applications:	WB
Recommended Dilution:	WB: 1:500-1:2000
Reactivity:	Human, Mouse
Modifications:	Phospho-specific
Host:	Rabbit
Isotype:	IgG
Clonality:	Polyclonal
Immunogen:	The antiserum was produced against A synthesized peptide derived from human MSK1 around the phosphorylation site of Serine 376
Formulation:	Rabbit IgG in phosphate buffered saline , pH 7.4, 150mM NaCl, 0.02% sodium azide and 50% glycerol.
Concentration:	lot specific
Purification:	The antibody was affinity-purified from rabbit antiserum by affinity-chromatography using epitope-specific peptide.
Conjugation:	Unconjugated
Storage:	Store at -20°C as received.
Stability:	Stable for 12 months from date of receipt.
Predicted Protein Size:	90 kDa
Gene Name:	ribosomal protein S6 kinase A5
Database Link:	NP_004746 Entrez Gene 73086 Mouse Entrez Gene 9252 Human O75582
Background:	an AGC kinase of the RSK family. Has two kinase domains connected by a regulatory linker region. Enzyme activity requires the presence of both kinase domains. Is phosphorylated and activated by Erk as well as p38 MAPK in response to growth factors and cellular stress.
Synonyms:	MSK1; MSPK1; RLPK

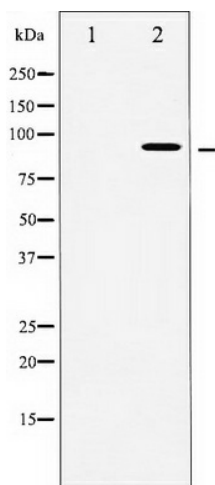


[View online »](#)

Protein Families: Druggable Genome, Protein Kinase, Transcription Factors

Protein Pathways: Bladder cancer, MAPK signaling pathway, Neurotrophin signaling pathway

Product images:



Western blot analysis of MSK1 phosphorylation expression in HeLa whole cell lysates, The lane on the left is treated with the antigen-specific peptide.