

## Product datasheet for **TA325822**

### MSK1 (RPS6KA5) Rabbit Polyclonal Antibody

#### Product data:

Product Type:	Primary Antibodies
Applications:	WB
Recommended Dilution:	WB: 1:500-1:2000; IHC: 1:50-1:200
Reactivity:	Human, Mouse
Modifications:	Phospho-specific
Host:	Rabbit
Isotype:	IgG
Clonality:	Polyclonal
Immunogen:	The antiserum was produced against A synthesized peptide derived from human MSK1 around the phosphorylation site of Serine 212
Formulation:	Rabbit IgG in phosphate buffered saline , pH 7.4, 150mM NaCl, 0.02% sodium azide and 50% glycerol.
Concentration:	lot specific
Purification:	The antibody was affinity-purified from rabbit antiserum by affinity-chromatography using epitope-specific peptide.
Conjugation:	Unconjugated
Storage:	Store at -20°C as received.
Stability:	Stable for 12 months from date of receipt.
Predicted Protein Size:	90 kDa
Gene Name:	ribosomal protein S6 kinase A5
Database Link:	<a href="#">NP_004746</a> <a href="#">Entrez Gene 73086 Mouse</a> <a href="#">Entrez Gene 9252 Human</a> <a href="#">O75582</a>
Background:	an AGC kinase of the RSK family. Has two kinase domains connected by a regulatory linker region. Enzyme activity requires the presence of both kinase domains. Is phosphorylated and activated by Erk as well as p38 MAPK in response to growth factors and cellular stress.
Synonyms:	MSK1; MSPK1; RLPK

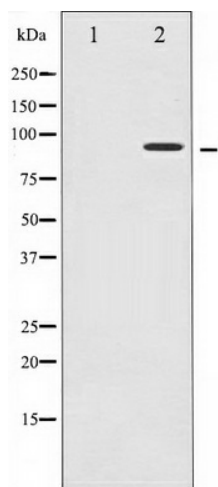


[View online »](#)

**Protein Families:** Druggable Genome, Protein Kinase, Transcription Factors

**Protein Pathways:** Bladder cancer, MAPK signaling pathway, Neurotrophin signaling pathway

**Product images:**



Western blot analysis of MSK1 phosphorylation expression in EGF treated NIH-3T3 whole cell lysates, The lane on the left is treated with the antigen-specific peptide.