

Product datasheet for **TA325819**

RPS6 Rabbit Polyclonal Antibody

Product data:

Product Type:	Primary Antibodies
Applications:	WB
Recommended Dilution:	WB: 1:500-1:2000
Reactivity:	Human, Mouse, Rat
Modifications:	Phospho-specific
Host:	Rabbit
Isotype:	IgG
Clonality:	Polyclonal
Immunogen:	The antiserum was produced against A synthesized peptide derived from human S6 Ribosomal Protein around the phosphorylation site of Serine 235
Formulation:	Rabbit IgG in phosphate buffered saline , pH 7.4, 150mM NaCl, 0.02% sodium azide and 50% glycerol.
Concentration:	lot specific
Purification:	The antibody was affinity-purified from rabbit antiserum by affinity-chromatography using epitope-specific peptide.
Conjugation:	Unconjugated
Storage:	Store at -20°C as received.
Stability:	Stable for 12 months from date of receipt.
Predicted Protein Size:	32 kDa
Gene Name:	ribosomal protein S6
Database Link:	NP_001001 Entrez Gene 20104 MouseEntrez Gene 29304 RatEntrez Gene 6194 Human P62753
Background:	Ribosomes, the organelles that catalyze protein synthesis, consist of a small 40S subunit and a large 60S subunit. Together these subunits are composed of 4 RNA species and approximately 80 structurally distinct proteins. This gene encodes a cytoplasmic ribosomal protein that is a component of the 40S subunit.

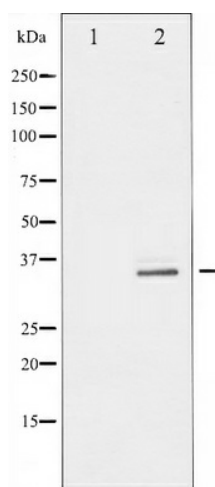


[View online »](#)

Synonyms: S6

Protein Pathways: Insulin signaling pathway, mTOR signaling pathway, Ribosome

Product images:



Western blot analysis of S6 Ribosomal Protein phosphorylation expression in serum treated 293 whole cell lysates, The lane on the left is treated with the antigen-specific peptide.