

Product datasheet for **TA325816**

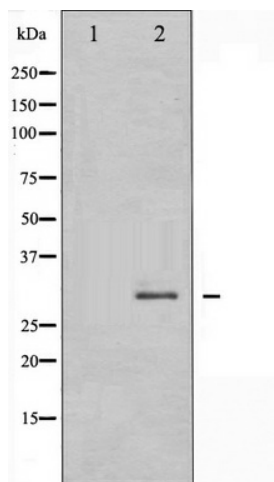
RPA34 (RPA2) Rabbit Polyclonal Antibody

Product data:

Product Type:	Primary Antibodies
Applications:	WB
Recommended Dilution:	WB: 1:500-1:2000; IHC: 1:50-1:200; IF/ICC: 1:100-1:500
Reactivity:	Human, Mouse
Host:	Rabbit
Isotype:	IgG
Clonality:	Polyclonal
Immunogen:	The antiserum was produced against A synthesized peptide derived from human RFA2
Formulation:	Rabbit IgG in phosphate buffered saline , pH 7.4, 150mM NaCl, 0.02% sodium azide and 50% glycerol.
Concentration:	lot specific
Purification:	The antibody was affinity-purified from rabbit antiserum by affinity-chromatography using epitope-specific peptide.
Conjugation:	Unconjugated
Storage:	Store at -20°C as received.
Stability:	Stable for 12 months from date of receipt.
Predicted Protein Size:	32 kDa
Gene Name:	replication protein A2
Database Link:	NP_002937 Entrez Gene 19891 Mouse Entrez Gene 6118 Human P15927
Background:	RFA2 is absolutely required for simian virus 40 DNA replication in vitro. It participates in a very early step in initiation. A single-stranded DNA-binding protein.
Synonyms:	REPA2; RP-A p32; RP-A p34; RPA32
Protein Families:	Druggable Genome, Stem cell - Pluripotency
Protein Pathways:	DNA replication, Homologous recombination, Mismatch repair, Nucleotide excision repair



[View online »](#)

Product images:

Western blot analysis of RFA2 expression in K562 whole cell lysates, The lane on the left is treated with the antigen-specific peptide.