

Product datasheet for **TA325813**

RHOA Rabbit Polyclonal Antibody

Product data:

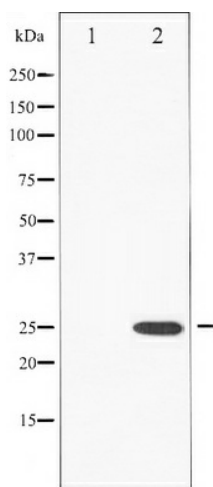
Product Type:	Primary Antibodies
Applications:	WB
Recommended Dilution:	WB: 1:500-1:2000
Reactivity:	Human, Mouse, Rat
Modifications:	Phospho-specific
Host:	Rabbit
Isotype:	IgG
Clonality:	Polyclonal
Immunogen:	The antiserum was produced against A synthesized peptide derived from human RhoA around the phosphorylation site of Serine 188
Formulation:	Rabbit IgG in phosphate buffered saline , pH 7.4, 150mM NaCl, 0.02% sodium azide and 50% glycerol.
Concentration:	lot specific
Purification:	The antibody was affinity-purified from rabbit antiserum by affinity-chromatography using epitope-specific peptide.
Conjugation:	Unconjugated
Storage:	Store at -20°C as received.
Stability:	Stable for 12 months from date of receipt.
Predicted Protein Size:	22 kDa
Gene Name:	ras homolog family member A
Database Link:	NP_001655 Entrez Gene 11848 MouseEntrez Gene 117273 RatEntrez Gene 387 Human P61586
Background:	RhoA is a small G protein of the Rho family. Regulates a signal transduction pathway linking plasma membrane receptors to the assembly of focal adhesions and actin stress fibers.
Synonyms:	ARH12; ARHA; RHO12; RHOH12
Protein Families:	Druggable Genome



[View online »](#)

Protein Pathways:

Adherens junction, Axon guidance, Chemokine signaling pathway, Focal adhesion, Leukocyte transendothelial migration, Neurotrophin signaling pathway, Pathogenic Escherichia coli infection, Pathways in cancer, Regulation of actin cytoskeleton, T cell receptor signaling pathway, TGF-beta signaling pathway, Tight junction, Vascular smooth muscle contraction, Wnt signaling pathway

Product images:

Western blot analysis of RhoA phosphorylation expression in HeLa whole cell lysates, The lane on the left is treated with the antigen-specific peptide.