

## Product datasheet for **TA325811**

### RET Rabbit Polyclonal Antibody

#### Product data:

Product Type:	Primary Antibodies
Applications:	WB
Recommended Dilution:	WB: 1:500-1:2000
Reactivity:	Human, Mouse, Rat
Modifications:	Phospho-specific
Host:	Rabbit
Isotype:	IgG
Clonality:	Polyclonal
Immunogen:	The antiserum was produced against A synthesized peptide derived from human Ret around the phosphorylation site of Tyrosine 1062
Formulation:	Rabbit IgG in phosphate buffered saline , pH 7.4, 150mM NaCl, 0.02% sodium azide and 50% glycerol.
Concentration:	lot specific
Purification:	The antibody was affinity-purified from rabbit antiserum by affinity-chromatography using epitope-specific peptide.
Conjugation:	Unconjugated
Storage:	Store at -20°C as received.
Stability:	Stable for 12 months from date of receipt.
Predicted Protein Size:	175 kDa
Gene Name:	ret proto-oncogene
Database Link:	<a href="#">NP_065681</a> <a href="#">Entrez Gene 19713 MouseEntrez Gene 24716 RatEntrez Gene 5979 Human P07949</a>
Background:	This gene, a member of the cadherin superfamily, encodes one of the receptor tyrosine kinases, which are cell-surface molecules that transduce signals for cell growth and differentiation. This gene plays a crucial role in neural crest development, and it can undergo oncogenic activation in vivo and in vitro by cytogenetic rearrangement.



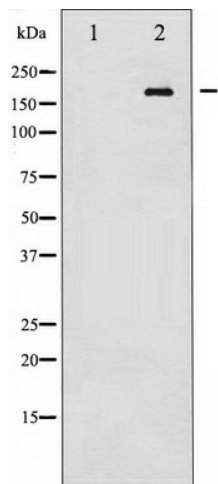
[View online »](#)

**Synonyms:** CDHF12; CDHR16; HSCR1; MEN2A; MEN2B; MTC1; PTC; RET-ELE1; RET51

**Protein Families:** Druggable Genome, Protein Kinase, Transmembrane

**Protein Pathways:** Endocytosis, Pathways in cancer, Thyroid cancer

**Product images:**



Western blot analysis of Ret phosphorylation expression in K562 whole cell lysates, The lane on the left is treated with the antigen-specific peptide.