

Product datasheet for **TA325809**

Rel B (RELB) Rabbit Polyclonal Antibody

Product data:

Product Type:	Primary Antibodies
Applications:	WB
Recommended Dilution:	WB: 1:500-1:2000; IHC: 1:50-1:200
Reactivity:	Human, Mouse
Modifications:	Phospho-specific
Host:	Rabbit
Isotype:	IgG
Clonality:	Polyclonal
Immunogen:	The antiserum was produced against A synthesized peptide derived from human RelB around the phosphorylation site of Serine 552
Formulation:	Rabbit IgG in phosphate buffered saline , pH 7.4, 150mM NaCl, 0.02% sodium azide and 50% glycerol.
Concentration:	lot specific
Purification:	The antibody was affinity-purified from rabbit antiserum by affinity-chromatography using epitope-specific peptide.
Conjugation:	Unconjugated
Storage:	Store at -20°C as received.
Stability:	Stable for 12 months from date of receipt.
Predicted Protein Size:	70 kDa
Gene Name:	RELB proto-oncogene, NF-kB subunit
Database Link:	NP_006500 Entrez Gene 19698 Mouse Entrez Gene 5971 Human Q01201
Background:	RelB a transcription factor of the nuclear factor-kappaB (NFkB) transcription complex. Stimulates promoter activity in the presence NFkB1/NFkB-p50. Plays role in regulation of apoptosis in hepatocellular carcinoma through activation of downstream target genes.
Synonyms:	I-REL; IREL; REL-B

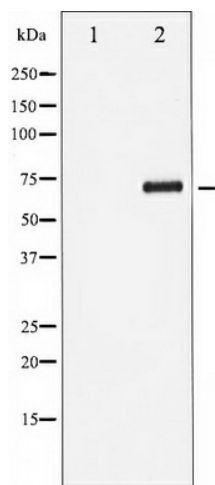


[View online »](#)

Protein Families: Druggable Genome, Transcription Factors

Protein Pathways: MAPK signaling pathway

Product images:



Western blot analysis of RelB phosphorylation expression in HepG2 whole cell lysates, The lane on the left is treated with the antigen-specific peptide.