

Product datasheet for **TA325791**

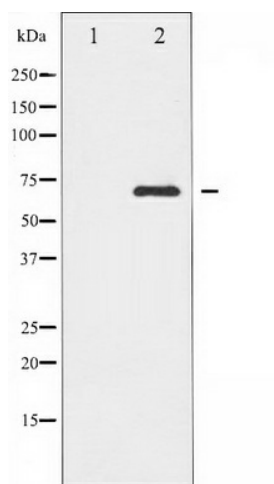
DARPP32 (PPP1R1B) Rabbit Polyclonal Antibody

Product data:

Product Type:	Primary Antibodies
Applications:	WB
Recommended Dilution:	WB: 1:500-1:2000; IHC: 1:50-1:200; IF/ICC: 1:100-1:500
Reactivity:	Human, Mouse, Rat
Host:	Rabbit
Isotype:	IgG
Clonality:	Polyclonal
Immunogen:	The antiserum was produced against A synthesized peptide derived from human C-RAF
Formulation:	Rabbit IgG in phosphate buffered saline , pH 7.4, 150mM NaCl, 0.02% sodium azide and 50% glycerol.
Concentration:	lot specific
Purification:	The antibody was affinity-purified from rabbit antiserum by affinity-chromatography using epitope-specific peptide.
Conjugation:	Unconjugated
Storage:	Store at -20°C as received.
Stability:	Stable for 12 months from date of receipt.
Predicted Protein Size:	74 kDa
Gene Name:	protein phosphatase 1 regulatory inhibitor subunit 1B
Database Link:	NP_115568 Entrez Gene 19049 Mouse Entrez Gene 360616 Rat Entrez Gene 84152 Human Q9UD71
Background:	Raf-1 is a MAP kinase kinase kinase (MAP3K) which functions downstream of the Ras family of membrane associated GTPases to which it binds directly. Once activated Raf-1 can phosphorylate to activate the dual specificity protein kinases MEK1 and MEK2 which in turn
Synonyms:	DARPP-32; DARPP32
Protein Families:	Druggable Genome



[View online »](#)

Product images:

Western blot analysis of C-RAF expression in UV treated HeLa whole cell lysates, The lane on the left is treated with the antigen-specific peptide.