

Product datasheet for **TA325785**

RACGAP1 Rabbit Polyclonal Antibody

Product data:

Product Type:	Primary Antibodies
Applications:	WB
Recommended Dilution:	WB: 1:500-1:2000; IHC: 1:50-1:200; IF/ICC: 1:100-1:500
Reactivity:	Human, Mouse, Rat
Modifications:	Phospho-specific
Host:	Rabbit
Isotype:	IgG
Clonality:	Polyclonal
Immunogen:	The antiserum was produced against A synthesized peptide derived from human GTPase Activating Protein around the phosphorylation site of Serine 387
Formulation:	Rabbit IgG in phosphate buffered saline , pH 7.4, 150mM NaCl, 0.02% sodium azide and 50% glycerol.
Concentration:	lot specific
Purification:	The antibody was affinity-purified from rabbit antiserum by affinity-chromatography using epitope-specific peptide.
Conjugation:	Unconjugated
Storage:	Store at -20°C as received.
Stability:	Stable for 12 months from date of receipt.
Predicted Protein Size:	72 kDa
Gene Name:	Rac GTPase activating protein 1
Database Link:	NP_001119575 Entrez Gene 26934 MouseEntrez Gene 315298 RatEntrez Gene 29127 Human Q9H0H5
Background:	Rho GTPases control a variety of cellular processes. There are 3 subtypes of Rho GTPases in the Ras superfamily of small G proteins: RHO (see MIM 165370), RAC (see RAC1; MIM 602048), and CDC42 (MIM 116952). GTPase-activating proteins (GAPs) bind activated forms of Rho GTPases and stimulate GTP hydrolysis.

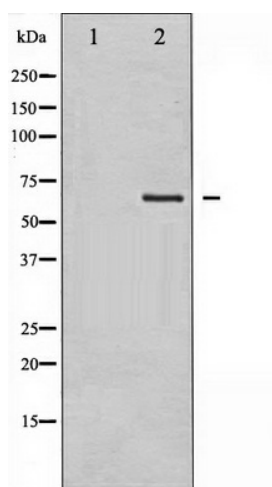


[View online »](#)

Synonyms: CYK4; HsCYK-4; ID-GAP; MgcRacGAP

Protein Families: Druggable Genome

Product images:



Western blot analysis of GTPase Activating Protein phosphorylation expression in COS7 whole cell lysates, The lane on the left is treated with the antigen-specific peptide.