

Product datasheet for **TA325783**

PIN1 Rabbit Polyclonal Antibody

Product data:

Product Type:	Primary Antibodies
Applications:	WB
Recommended Dilution:	WB: 1:500-1:2000; IHC: 1:50-1:200
Reactivity:	Human, Mouse, Rat
Modifications:	Phospho-specific
Host:	Rabbit
Isotype:	IgG
Clonality:	Polyclonal
Immunogen:	The antiserum was produced against A synthesized peptide derived from human Pin1 around the phosphorylation site of Serine 16
Formulation:	Rabbit IgG in phosphate buffered saline , pH 7.4, 150mM NaCl, 0.02% sodium azide and 50% glycerol.
Concentration:	lot specific
Purification:	The antibody was affinity-purified from rabbit antiserum by affinity-chromatography using epitope-specific peptide.
Conjugation:	Unconjugated
Storage:	Store at -20°C as received.
Stability:	Stable for 12 months from date of receipt.
Predicted Protein Size:	18 kDa
Gene Name:	peptidylprolyl cis/trans isomerase, NIMA-interacting 1
Database Link:	NP_006212 Entrez Gene 23988 MouseEntrez Gene 298696 RatEntrez Gene 5300 Human Q13526
Background:	Pin1 is a member of the parvulin family of peptidyl-prolyl isomerases (PPlase), has been implicated in the G2-M transition of the cell cycle. Has two distinct functional domains: an N-terminal WW domain and a C-terminal PPlase domain.
Synonyms:	DOD; UBL5

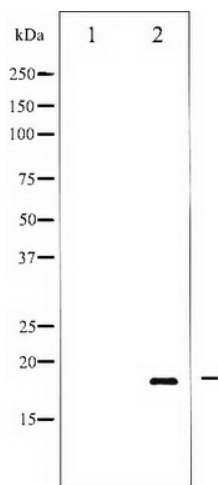


[View online »](#)

Protein Families: Druggable Genome

Protein Pathways: RIG-I-like receptor signaling pathway

Product images:



Western blot analysis of Pin1 phosphorylation expression in Insulin treated COS7 whole cell lysates, The lane on the left is treated with the antigen-specific peptide.