

Product datasheet for **TA325775**

CD31 (PECAM1) Rabbit Polyclonal Antibody

Product data:

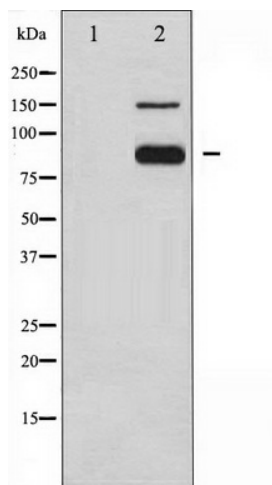
Product Type:	Primary Antibodies
Applications:	WB
Recommended Dilution:	WB: 1:500-1:2000; IF/ICC: 1:100-1:500
Reactivity:	Human
Modifications:	Phospho-specific
Host:	Rabbit
Isotype:	IgG
Clonality:	Polyclonal
Immunogen:	The antiserum was produced against A synthesized peptide derived from human PECAM-1 around the phosphorylation site of Tyrosine 713
Formulation:	Rabbit IgG in phosphate buffered saline , pH 7.4, 150mM NaCl, 0.02% sodium azide and 50% glycerol.
Concentration:	lot specific
Purification:	The antibody was affinity-purified from rabbit antiserum by affinity-chromatography using epitope-specific peptide.
Conjugation:	Unconjugated
Storage:	Store at -20°C as received.
Stability:	Stable for 12 months from date of receipt.
Predicted Protein Size:	150 kDa
Gene Name:	platelet and endothelial cell adhesion molecule 1
Database Link:	NP_000433 Entrez Gene 5175 Human P16284
Background:	PECAM-1 is a cell adhesion molecule expressed on platelets and at endothelial cell intercellular junctions.
Synonyms:	CD31; EndoCAM; endoCAM; GPIIA; PECA1; PECAM-1
Protein Families:	Druggable Genome, ES Cell Differentiation/IPS, Transmembrane



[View online »](#)

Protein Pathways: Cell adhesion molecules (CAMs), Leukocyte transendothelial migration

Product images:



Western blot analysis of PECAM-1 phosphorylation expression in Jurkat whole cell lysates, The lane on the left is treated with the antigen-specific peptide.