

Product datasheet for **TA325773**

PDPK1 Rabbit Polyclonal Antibody

Product data:

Product Type:	Primary Antibodies
Applications:	WB
Recommended Dilution:	WB: 1:500-1:2000; IHC: 1:50-1:200
Reactivity:	Human, Mouse, Rat
Modifications:	Phospho-specific
Host:	Rabbit
Isotype:	IgG
Clonality:	Polyclonal
Immunogen:	The antiserum was produced against A synthesized peptide derived from human PDK1 around the phosphorylation site of Serine 241
Formulation:	Rabbit IgG in phosphate buffered saline , pH 7.4, 150mM NaCl, 0.02% sodium azide and 50% glycerol.
Concentration:	lot specific
Purification:	The antibody was affinity-purified from rabbit antiserum by affinity-chromatography using epitope-specific peptide.
Conjugation:	Unconjugated
Storage:	Store at -20°C as received.
Stability:	Stable for 12 months from date of receipt.
Predicted Protein Size:	63 kDa
Gene Name:	3-phosphoinositide dependent protein kinase 1
Database Link:	NP_001248745 Entrez Gene 18607 MouseEntrez Gene 81745 RatEntrez Gene 5170 Human O15530
Background:	PDK1 an AGC kinase of the PKB family that contains a PH domain. Involved in a wide variety of processes including cell proliferation, differentiation and apoptosis. Autophosphorylation in the activation loop is necessary for activity.
Synonyms:	PDK1; PDPK2; PDPK2P; PRO0461

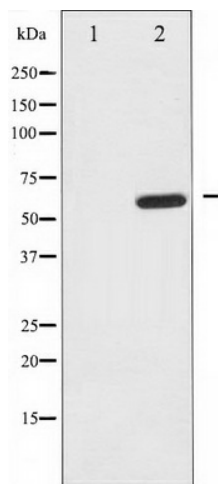


[View online »](#)

Protein Families: Druggable Genome, Protein Kinase

Protein Pathways: Endometrial cancer, Focal adhesion, Insulin signaling pathway, mTOR signaling pathway, Non-small cell lung cancer, PPAR signaling pathway, Prostate cancer

Product images:



Western blot analysis of PDK1 phosphorylation expression in EGF treated MDA-MB-435 whole cell lysates, The lane on the left is treated with the antigen-specific peptide.