

## Product datasheet for **TA325766**

### PDGF beta (PDGFB) Rabbit Polyclonal Antibody

#### Product data:

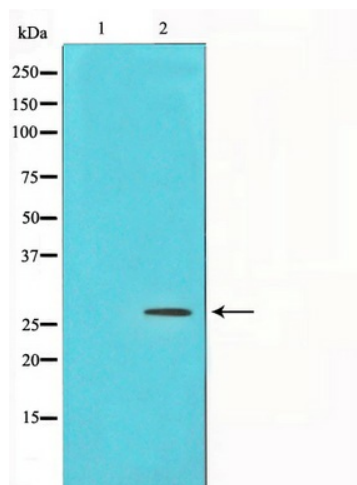
Product Type:	Primary Antibodies
Applications:	WB
Recommended Dilution:	WB: 1:500-1:2000
Reactivity:	Human, Mouse, Rat
Host:	Rabbit
Isotype:	IgG
Clonality:	Polyclonal
Immunogen:	The antiserum was produced against a synthesized A synthesized peptide derived from human PDGFB.
Formulation:	Rabbit IgG in phosphate buffered saline , pH 7.4, 150mM NaCl, 0.02% sodium azide and 50% glycerol.
Concentration:	lot specific
Purification:	The antibody was affinity-purified from rabbit antiserum by affinity-chromatography using epitope-specific peptide.
Conjugation:	Unconjugated
Storage:	Store at -20°C as received.
Stability:	Stable for 12 months from date of receipt.
Gene Name:	platelet derived growth factor subunit B
Database Link:	<a href="#">NP_002599</a> <a href="#">Entrez Gene 18591 Mouse</a> <a href="#">Entrez Gene 24628 Rat</a> <a href="#">Entrez Gene 5155 Human</a> <a href="#">P01127</a>
Background:	PDGFB Platelet-derived growth factor is a potent mitogen for cells of mesenchymal origin. Binding of this growth factor to its affinity receptor elicits a variety of cellular responses. It is released by platelets upon wounding and plays an important role in stimulating adjacent cells to grow and thereby heals the wound.
Synonyms:	c-sis; IBGC5; PDGF-2; PDGF2; SIS; SSV
Protein Families:	Druggable Genome



[View online »](#)

**Protein Pathways:** Cytokine-cytokine receptor interaction, Focal adhesion, Gap junction, Glioma, MAPK signaling pathway, Melanoma, Pathways in cancer, Prostate cancer, Regulation of actin cytoskeleton, Renal cell carcinoma

**Product images:**



Western blot analysis on NIH-3T3 cell lysate using PDGFB Antibody