

Product datasheet for **TA325764**

PDCD4 Rabbit Polyclonal Antibody

Product data:

Product Type:	Primary Antibodies
Applications:	WB
Recommended Dilution:	WB: 1:500-1:2000; IHC: 1:50-1:200
Reactivity:	Human, Mouse, Rat
Modifications:	Phospho-specific
Host:	Rabbit
Isotype:	IgG
Clonality:	Polyclonal
Immunogen:	The antiserum was produced against A synthesized peptide derived from human PDCD4 around the phosphorylation site of Serine 457
Formulation:	Rabbit IgG in phosphate buffered saline , pH 7.4, 150mM NaCl, 0.02% sodium azide and 50% glycerol.
Concentration:	lot specific
Purification:	The antibody was affinity-purified from rabbit antiserum by affinity-chromatography using epitope-specific peptide.
Conjugation:	Unconjugated
Storage:	Store at -20°C as received.
Stability:	Stable for 12 months from date of receipt.
Predicted Protein Size:	51 kDa
Gene Name:	programmed cell death 4 (neoplastic transformation inhibitor)
Database Link:	NP_001186421 Entrez Gene 18569 MouseEntrez Gene 64031 RatEntrez Gene 27250 Human Q53EL6
Background:	This gene encodes a protein localized to the nucleus in proliferating cells. Expression of this gene is modulated by cytokines in natural killer and T cells. The gene product is thought to play a role in apoptosis but the specific role has not yet been determined. Two transcripts encoding different isoforms have been identified.

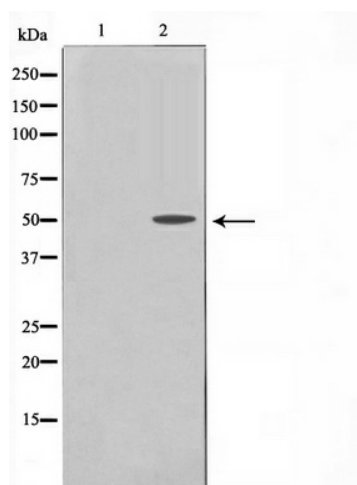


[View online »](#)

Synonyms: H731

Protein Families: Druggable Genome

Product images:



Western blot analysis of PDCD4 phosphorylation expression in serum treated 293 whole cell lysates, The lane on the left is treated with the antigen-specific peptide.