

Product datasheet for **TA325759**

TrkB (NTRK2) Rabbit Polyclonal Antibody

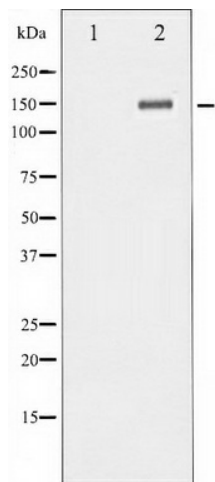
Product data:

Product Type:	Primary Antibodies
Applications:	WB
Recommended Dilution:	WB: 1:500-1:2000; IHC: 1:50-1:200; IF/ICC: 1:100-1:500
Reactivity:	Human, Mouse, Rat
Modifications:	Phospho-specific
Host:	Rabbit
Isotype:	IgG
Clonality:	Polyclonal
Immunogen:	The antiserum was produced against A synthesized peptide derived from human Trk B around the phosphorylation site of Tyrosine 705 (peptide seq 699-711aa: DVYSTDY(p)YRVGG)
Formulation:	Rabbit IgG in phosphate buffered saline , pH 7.4, 150mM NaCl, 0.02% sodium azide and 50% glycerol.
Concentration:	lot specific
Purification:	The antibody was affinity-purified from rabbit antiserum by affinity-chromatography using epitope-specific peptide.
Conjugation:	Unconjugated
Storage:	Store at -20°C as received.
Stability:	Stable for 12 months from date of receipt.
Predicted Protein Size:	145 kDa
Gene Name:	neurotrophic receptor tyrosine kinase 2
Database Link:	NP_001007098 Entrez Gene 18212 Mouse Entrez Gene 25054 Rat Entrez Gene 4915 Human Q16620
Background:	This gene encodes a member of the neurotrophic tyrosine receptor kinase (NTRK) family. This kinase is a membrane-bound receptor that, upon neurotrophin binding, phosphorylates itself and members of the MAPK pathway. Signalling through this kinase leads to cell differentiation.



[View online »](#)

Synonyms: GP145-TrkB; trk-B; TRKB
Protein Families: Druggable Genome, Protein Kinase, Transmembrane
Protein Pathways: MAPK signaling pathway, Neurotrophin signaling pathway

Product images:

Western blot analysis of Trk B phosphorylation expression in Mouse kidney tissue lysates, The lane on the left is treated with the antigen-specific peptide.