

## Product datasheet for **TA325747**

### Nucleophosmin (NPM1) Rabbit Polyclonal Antibody

#### Product data:

Product Type:	Primary Antibodies
Applications:	WB
Recommended Dilution:	WB: 1:500-1:2000; IHC: 1:50-1:200; IF/ICC: 1:100-1:500
Reactivity:	Human
Modifications:	Phospho-specific
Host:	Rabbit
Isotype:	IgG
Clonality:	Polyclonal
Immunogen:	The antiserum was produced against A synthesized peptide derived from human NPM around the phosphorylation site of Threonine 199
Formulation:	Rabbit IgG in phosphate buffered saline , pH 7.4, 150mM NaCl, 0.02% sodium azide and 50% glycerol.
Concentration:	lot specific
Purification:	The antibody was affinity-purified from rabbit antiserum by affinity-chromatography using epitope-specific peptide.
Conjugation:	Unconjugated
Storage:	Store at -20°C as received.
Stability:	Stable for 12 months from date of receipt.
Predicted Protein Size:	38 kDa
Gene Name:	nucleophosmin (nucleolar phosphoprotein B23, numatrin)
Database Link:	<a href="#">NP_001032827</a> <a href="#">Entrez Gene 4869 Human</a> <a href="#">P06748</a>
Background:	a nucleolar protein associated with nucleolar ribonucleoprotein structures and that binds single-stranded nucleic acids. Is a major component of template activating factor (TAF)-III. It plays a role in controlling centrosome duplication, and may function in the assembly and/or transport of the ribosome. Two alternatively spliced isoforms have been described.

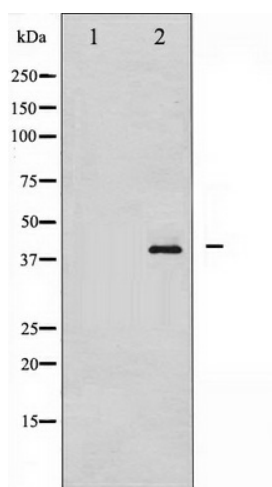


[View online »](#)

Synonyms: B23; NPM

Protein Families: Druggable Genome, Stem cell - Pluripotency, Transcription Factors

### Product images:



Western blot analysis of NPM phosphorylation expression in Jurkat whole cell lysates, The lane on the left is treated with the antigen-specific peptide.