

Product datasheet for **TA325740**

eNOS (NOS3) Rabbit Polyclonal Antibody

Product data:

Product Type:	Primary Antibodies
Applications:	WB
Recommended Dilution:	WB: 1:500-1:2000
Reactivity:	Human, Mouse, Rat
Host:	Rabbit
Isotype:	IgG
Clonality:	Polyclonal
Immunogen:	The antiserum was produced against a synthesized A synthesized peptide derived from human eNOS.
Formulation:	Rabbit IgG in phosphate buffered saline , pH 7.4, 150mM NaCl, 0.02% sodium azide and 50% glycerol.
Concentration:	lot specific
Purification:	The antibody was affinity-purified from rabbit antiserum by affinity-chromatography using epitope-specific peptide.
Conjugation:	Unconjugated
Storage:	Store at -20°C as received.
Stability:	Stable for 12 months from date of receipt.
Gene Name:	nitric oxide synthase 3
Database Link:	NP_000594 Entrez Gene 18127 MouseEntrez Gene 24600 RatEntrez Gene 4846 Human P29474
Background:	eNOS endothelial constitutive nitric oxide synthase. Synthesizes nitric oxide (NO) from arginine and oxygen, which is implicated in vascular smooth muscle relaxation through a cGMP-mediated signal transduction pathway. NO mediates vascular endothelial growth factor (VEGF)-induced angiogenesis in coronary vessels and promotes blood clotting through the activation of platelets. Induced in humans by caloric restriction. Stimulated by calcium/calmodulin. Inhibited by NOSIP and NOSTRIN.
Synonyms:	ECNOS; eNOS

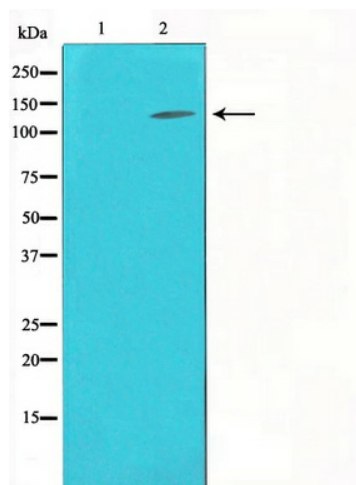


[View online »](#)

Protein Families: Druggable Genome

Protein Pathways: Alzheimer's disease, Amyotrophic lateral sclerosis (ALS), Arginine and proline metabolism, Calcium signaling pathway, Long-term depression, Metabolic pathways, Pathways in cancer, Small cell lung cancer, VEGF signaling pathway

Product images:



Western blot analysis on K562 cell lysate using eNOS Antibody