

## Product datasheet for **TA325737**

### NOS1 Rabbit Polyclonal Antibody

#### Product data:

Product Type:	Primary Antibodies
Applications:	WB
Recommended Dilution:	WB: 1:500-1:2000; IHC: 1:50-1:200; IF/ICC: 1:100-1:500
Reactivity:	Human
Modifications:	Phospho-specific
Host:	Rabbit
Isotype:	IgG
Clonality:	Polyclonal
Immunogen:	The antiserum was produced against A synthesized peptide derived from human n-NOS around the phosphorylation site of Serine 852
Formulation:	Rabbit IgG in phosphate buffered saline , pH 7.4, 150mM NaCl, 0.02% sodium azide and 50% glycerol.
Concentration:	lot specific
Purification:	The antibody was affinity-purified from rabbit antiserum by affinity-chromatography using epitope-specific peptide.
Conjugation:	Unconjugated
Storage:	Store at -20°C as received.
Stability:	Stable for 12 months from date of receipt.
Predicted Protein Size:	160 kDa
Gene Name:	nitric oxide synthase 1
Database Link:	<a href="#">NP_000611</a> <a href="#">Entrez Gene 4842 Human</a> <a href="#">P29475</a>
Background:	nNOS nitric oxide synthase 1, neuronal form. Produces nitric oxide which is a messenger molecule with diverse functions and displays many properties of a neurotransmitter in the brain and peripheral nervous system. May be an effector enzyme for the dystrophin complex.



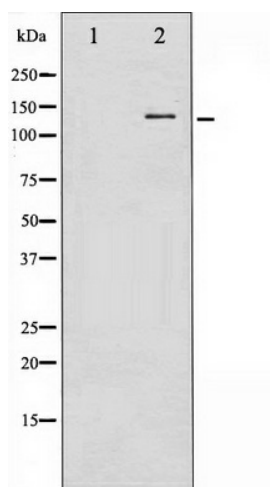
[View online »](#)

**Synonyms:** bNOS; IHPS1; N-NOS; NC-NOS; nNOS; NOS

**Protein Families:** Druggable Genome

**Protein Pathways:** Alzheimer's disease, Amyotrophic lateral sclerosis (ALS), Arginine and proline metabolism, Calcium signaling pathway, Long-term depression, Metabolic pathways, Pathways in cancer, Small cell lung cancer

### Product images:



Western blot analysis of n-NOS phosphorylation expression in A549 whole cell lysates, The lane on the left is treated with the antigen-specific peptide.