

Product datasheet for **TA325732**

IKB beta (NFKBIB) Rabbit Polyclonal Antibody

Product data:

Product Type:	Primary Antibodies
Applications:	WB
Recommended Dilution:	WB: 1:500-1:2000; IHC: 1:50-1:200; IF/ICC: 1:100-1:500
Reactivity:	Human, Mouse, Rat
Modifications:	Phospho-specific
Host:	Rabbit
Isotype:	IgG
Clonality:	Polyclonal
Immunogen:	The antiserum was produced against A synthesized peptide derived from human I kappaB-beta around the phosphorylation site of Serine 23
Formulation:	Rabbit IgG in phosphate buffered saline , pH 7.4, 150mM NaCl, 0.02% sodium azide and 50% glycerol.
Concentration:	lot specific
Purification:	The antibody was affinity-purified from rabbit antiserum by affinity-chromatography using epitope-specific peptide.
Conjugation:	Unconjugated
Storage:	Store at -20°C as received.
Stability:	Stable for 12 months from date of receipt.
Predicted Protein Size:	37 kDa
Gene Name:	NFKB inhibitor beta
Database Link:	NP_001230045 Entrez Gene 18036 Mouse Entrez Gene 81525 Rat Entrez Gene 4793 Human Q15653
Background:	kB-beta a protein of the NF-kappa-B inhibitor family. Inhibits NF-kappa-B by complexing with and trapping it in the cytoplasm. However, the unphosphorylated form resynthesized after cell stimulation is able to bind NF-kappa-B allowing its transport to the nucleus and protecting it to further IKBA- dependent inactivation.



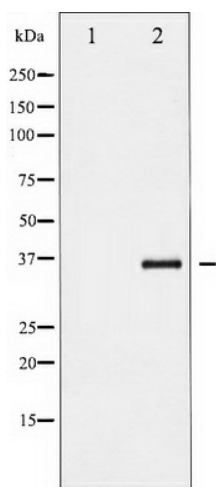
[View online »](#)

Synonyms: IKBB; TRIP9

Protein Families: Stem cell - Pluripotency, Transcription Factors

Protein Pathways: Adipocytokine signaling pathway, B cell receptor signaling pathway, Chemokine signaling pathway, Cytosolic DNA-sensing pathway, Neurotrophin signaling pathway, NOD-like receptor signaling pathway, RIG-I-like receptor signaling pathway, T cell receptor signaling pathway

Product images:



Western blot analysis of I kappaB- beta phosphorylation expression in TNF-a treated HeLa whole cell lysates, The lane on the left is treated with the antigen-specific peptide.