

## Product datasheet for **TA325723**

### NFkB p100 / p52 (NFKB2) Rabbit Polyclonal Antibody

#### Product data:

Product Type:	Primary Antibodies
Applications:	WB
Recommended Dilution:	WB: 1:500-1:2000; IHC: 1:50-1:200; IP
Reactivity:	Human, Mouse, Rat
Modifications:	Phospho-specific
Host:	Rabbit
Isotype:	IgG
Clonality:	Polyclonal
Immunogen:	The antiserum was produced against A synthesized peptide derived from human NF- kappaB p100/p52 around the phosphorylation site of Serine 869
Formulation:	Rabbit IgG in phosphate buffered saline , pH 7.4, 150mM NaCl, 0.02% sodium azide and 50% glycerol.
Concentration:	lot specific
Purification:	The antibody was affinity-purified from rabbit antiserum by affinity-chromatography using epitope-specific peptide.
Conjugation:	Unconjugated
Storage:	Store at -20°C as received.
Stability:	Stable for 12 months from date of receipt.
Predicted Protein Size:	100 kDa
Gene Name:	nuclear factor kappa B subunit 2
Database Link:	<a href="#">NP_001070962</a> <a href="#">Entrez Gene 18034 MouseEntrez Gene 309452 RatEntrez Gene 4791 Human Q00653</a>
Background:	NFkB-p100 a transcription factor of the nuclear factor-kappaB ( NFkB) group. Precursor of the p52 subunit of the nuclear factor NF-kappa-B, which binds to the kappa-B consensus sequence 5'-GGRNNYYCC-3', located in the enhancer region of genes involved in immune response and acute phase reactions.



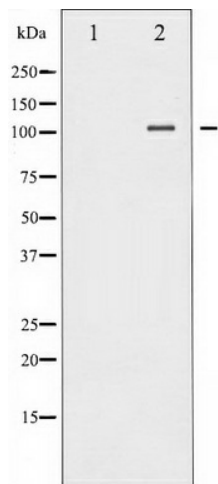
[View online »](#)

**Synonyms:** CVID10; H2TF1; LYT-10; LYT10; NF-kB2; p52; p100

**Protein Families:** Transcription Factors

**Protein Pathways:** MAPK signaling pathway, Pathways in cancer

**Product images:**



Western blot analysis of NF- $\kappa$ B p100/p52 phosphorylation expression in TNF- $\alpha$  treated MDA-MB-435 whole cell lysates, The lane on the left is treated with the antigen-specific peptide.