

## Product datasheet for **TA325711S**

### NF2 Rabbit Polyclonal Antibody

#### Product data:

Product Type:	Primary Antibodies
Applications:	WB
Recommended Dilution:	WB: 1:500-1:2000
Reactivity:	Human, Mouse, Rat
Modifications:	Phospho-specific
Host:	Rabbit
Isotype:	IgG
Clonality:	Polyclonal
Immunogen:	The antiserum was produced against A synthesized peptide derived from human Merlin around the phosphorylation site of Serine 518
Formulation:	Rabbit IgG in phosphate buffered saline , pH 7.4, 150mM NaCl, 0.02% sodium azide and 50% glycerol.
Concentration:	lot specific
Purification:	The antibody was affinity-purified from rabbit antiserum by affinity-chromatography using epitope-specific peptide.
Conjugation:	Unconjugated
Storage:	Store at -20°C as received.
Stability:	Stable for 12 months from date of receipt.
Predicted Protein Size:	70 kDa
Gene Name:	neurofibromin 2 (merlin)
Database Link:	<a href="#">NP_000259</a> <a href="#">Entrez Gene 18016 Mouse</a> <a href="#">Entrez Gene 25744 Rat</a> <a href="#">Entrez Gene 4771 Human</a> <a href="#">P35240</a>
Background:	This gene encodes a protein that is similar to some members of the ERM (ezrin, radixin, moesin) family of proteins that are thought to link cytoskeletal components with proteins in the cell membrane. This gene product has been shown to interact with cell-surface proteins, proteins involved in cytoskeletal dynamics and proteins involved in regulating ion transport.

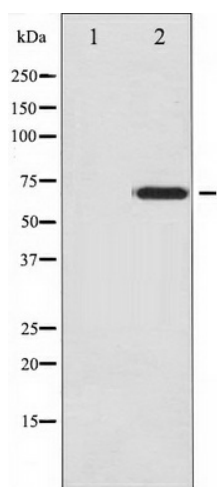


[View online »](#)

Synonyms: ACN; BANF; SCH

Protein Families: Druggable Genome

### Product images:



Western blot analysis of Merlin phosphorylation expression in IFN- $\alpha$  treated HuvEc whole cell lysates, The lane on the left is treated with the antigen-specific peptide.