

Product datasheet for **TA325709**

NCF1 Rabbit Polyclonal Antibody

Product data:

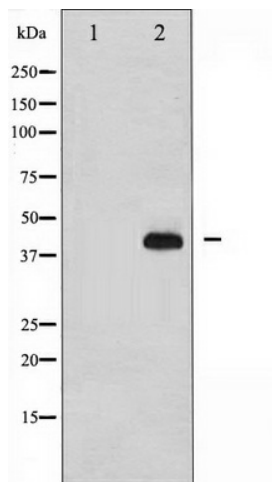
Product Type:	Primary Antibodies
Applications:	WB
Recommended Dilution:	WB: 1:500-1:2000; IHC: 1:50-1:200; IF/ICC: 1:100-1:500
Reactivity:	Human
Modifications:	Phospho-specific
Host:	Rabbit
Isotype:	IgG
Clonality:	Polyclonal
Immunogen:	The antiserum was produced against A synthesized peptide derived from human p47 phox around the phosphorylation site of Serine 359
Formulation:	Rabbit IgG in phosphate buffered saline , pH 7.4, 150mM NaCl, 0.02% sodium azide and 50% glycerol.
Concentration:	lot specific
Purification:	The antibody was affinity-purified from rabbit antiserum by affinity-chromatography using epitope-specific peptide.
Conjugation:	Unconjugated
Storage:	Store at -20°C as received.
Stability:	Stable for 12 months from date of receipt.
Predicted Protein Size:	45 kDa
Gene Name:	neutrophil cytosolic factor 1
Database Link:	NP_000256 Entrez Gene 653361 Human P14598
Background:	The 47-kilodalton cytosolic subunit of the multi-protein complex known as NADPH oxidase is found in neutrophils. The holo-oxidase produces a burst of superoxide which is delivered to the lumen of the neutrophil phagosome. Contains 2 SH2 domains.
Synonyms:	NCF1A; NOXO2; p47phox; SH3PXD1A



[View online »](#)

Protein Pathways: Chemokine signaling pathway, Fc gamma R-mediated phagocytosis, Leukocyte transendothelial migration, Pathogenic Escherichia coli infection, Regulation of actin cytoskeleton

Product images:



Western blot analysis of p70 S6 phosphorylation expression in nocodazole treated HeLa whole cell lysates, The lane on the left is treated with the antigen-specific peptide.