

## Product datasheet for **TA325707**

### p95 NBS1 (NBN) Rabbit Polyclonal Antibody

#### Product data:

Product Type:	Primary Antibodies
Applications:	WB
Recommended Dilution:	WB: 1:500-1:2000
Reactivity:	Human, Rat
Modifications:	Phospho-specific
Host:	Rabbit
Isotype:	IgG
Clonality:	Polyclonal
Immunogen:	The antiserum was produced against A synthesized peptide derived from human p95/NBS1 around the phosphorylation site of Serine 343
Formulation:	Rabbit IgG in phosphate buffered saline , pH 7.4, 150mM NaCl, 0.02% sodium azide and 50% glycerol.
Concentration:	lot specific
Purification:	The antibody was affinity-purified from rabbit antiserum by affinity-chromatography using epitope-specific peptide.
Conjugation:	Unconjugated
Storage:	Store at -20°C as received.
Stability:	Stable for 12 months from date of receipt.
Predicted Protein Size:	95 kDa
Gene Name:	nibrin
Database Link:	<a href="#">NP_002476</a> <a href="#">Entrez Gene 85482 Rat</a> <a href="#">Entrez Gene 4683 Human</a> <a href="#">O60934</a>
Background:	NBS1 is a member of the MRE11/RAD50 double-strand break repair complex. Involved in DNA double-strand break repair and DNA damage-induced checkpoint activation. Mutation results in the Nijmegen breakage syndrome (NBS), an autosomal recessive chromosomal instability syndrome.



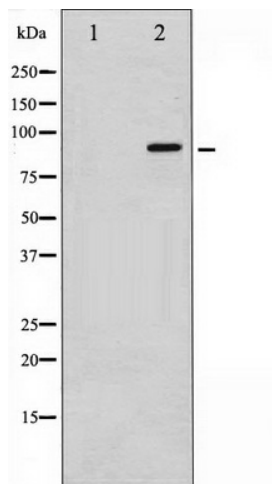
[View online »](#)

**Synonyms:** AT-V1; AT-V2; ATV; NBS; NBS1; P95

**Protein Families:** Druggable Genome

**Protein Pathways:** Homologous recombination

**Product images:**



Western blot analysis of p95/NBS1 phosphorylation expression in Jurkat whole cell lysates, The lane on the left is treated with the antigen-specific peptide.