

## Product datasheet for **TA325695**

### MMP9 Rabbit Polyclonal Antibody

#### Product data:

Product Type:	Primary Antibodies
Applications:	WB
Recommended Dilution:	WB: 1:500-1:2000
Reactivity:	Human
Host:	Rabbit
Isotype:	IgG
Clonality:	Polyclonal
Immunogen:	The antiserum was produced against a synthesized A synthesized peptide derived from human MMP9.
Formulation:	Rabbit IgG in phosphate buffered saline , pH 7.4, 150mM NaCl, 0.02% sodium azide and 50% glycerol.
Concentration:	lot specific
Purification:	The antibody was affinity-purified from rabbit antiserum by affinity-chromatography using epitope-specific peptide.
Conjugation:	Unconjugated
Storage:	Store at -20°C as received.
Stability:	Stable for 12 months from date of receipt.
Gene Name:	matrix metalloproteinase 9
Database Link:	<a href="#">NP_004985</a> <a href="#">Entrez Gene 4318 Human</a> <a href="#">P14780</a>



[View online »](#)

**Background:**

MMP9 May play an essential role in local proteolysis of the extracellular matrix and in leukocyte migration. Could play a role in bone osteoclastic resorption. Cleaves KiSS1 at a Gly-|-Leu bond. Cleaves type IV and type V collagen into large C-terminal three quarter fragments and shorter N-terminal one quarter fragments. Degrades fibronectin but not laminin or Pz-peptide. Belongs to the peptidase M10A family. Activated by 4-aminophenylmercuric acetate and phorbol ester. Exists as monomer or homodimer; disulfide-linked. Exists also as heterodimer with a 25 kDa protein. Macrophages and transformed cell lines produce only the monomeric form. Interacts with ECM1.

**Synonyms:**

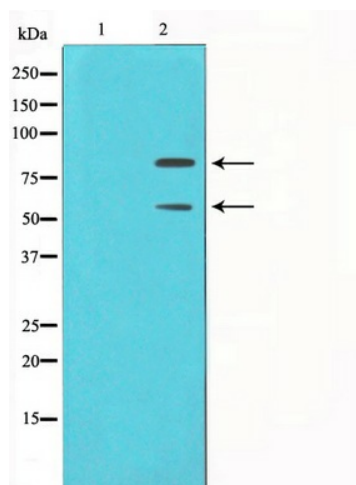
CLG4B; GELB; MANDP2; MMP-9

**Protein Families:**

Druggable Genome, Protease

**Protein Pathways:**

Bladder cancer, Leukocyte transendothelial migration, Pathways in cancer

**Product images:**

Western blot analysis on HepG2 cell lysate using MMP9 Antibody