

Product datasheet for **TA325694**

MITF Rabbit Polyclonal Antibody

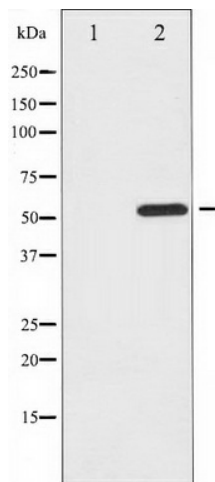
Product data:

Product Type:	Primary Antibodies
Applications:	WB
Recommended Dilution:	WB: 1:500-1:2000
Reactivity:	Human, Mouse
Modifications:	Phospho-specific
Host:	Rabbit
Isotype:	IgG
Clonality:	Polyclonal
Immunogen:	The antiserum was produced against A synthesized peptide derived from human MITF around the phosphorylation site of Serine 180/73
Formulation:	Rabbit IgG in phosphate buffered saline , pH 7.4, 150mM NaCl, 0.02% sodium azide and 50% glycerol.
Concentration:	lot specific
Purification:	The antibody was affinity-purified from rabbit antiserum by affinity-chromatography using epitope-specific peptide.
Conjugation:	Unconjugated
Storage:	Store at -20°C as received.
Stability:	Stable for 12 months from date of receipt.
Predicted Protein Size:	52 kDa
Gene Name:	melanogenesis associated transcription factor
Database Link:	NP_000239 Entrez Gene 17342 Mouse Entrez Gene 4286 Human O75030
Background:	MITF is a transcription factor that contains both basic helix-loop-helix and leucine zipper structural features. Plays a critical role in the differentiation of various cell types including neural crest- derived melanocytes, mast cells, osteoclasts and optic cup-derived retinal pigment epithelium.



[View online »](#)

Synonyms: bHLHe32; CMM8; MI; WS2; WS2A
Protein Families: Druggable Genome, Transcription Factors
Protein Pathways: Melanogenesis, Melanoma, Pathways in cancer

Product images:

Western blot analysis of MITF phosphorylation expression in COS7 whole cell lysates, The lane on the left is treated with the antigen-specific peptide.