

Product datasheet for **TA325685**

MEF2A Rabbit Polyclonal Antibody

Product data:

Product Type:	Primary Antibodies
Applications:	WB
Recommended Dilution:	WB: 1:500-1:2000; IHC: 1:50-1:200; IP
Reactivity:	Human, Mouse, Rat
Modifications:	Phospho-specific
Host:	Rabbit
Isotype:	IgG
Clonality:	Polyclonal
Immunogen:	The antiserum was produced against A synthesized peptide derived from human MEF2A around the phosphorylation site of Threonine 312
Formulation:	Rabbit IgG in phosphate buffered saline , pH 7.4, 150mM NaCl, 0.02% sodium azide and 50% glycerol.
Concentration:	lot specific
Purification:	The antibody was affinity-purified from rabbit antiserum by affinity-chromatography using epitope-specific peptide.
Conjugation:	Unconjugated
Storage:	Store at -20°C as received.
Stability:	Stable for 12 months from date of receipt.
Predicted Protein Size:	55 kDa
Gene Name:	myocyte enhancer factor 2A
Database Link:	NP_001124398 Entrez Gene 17258 MouseEntrez Gene 309957 RatEntrez Gene 4205 Human Q02078
Background:	MEF2A a myocyte-specific enhancing transcription factor which binds specifically to the MEF2 element present in the regulatory regions of many, if not all, muscle-specific genes. A member of the MADS gene family that also includes several homeotic genes and other transcription factors, all of which share a conserved DNA-binding domain.

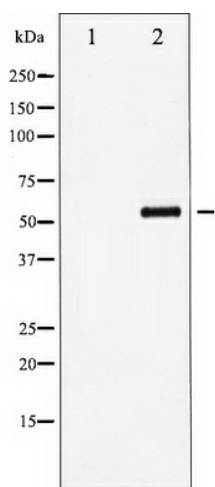


[View online »](#)

Synonyms: ADCAD1; mef2; RSRFC4; RSRFC9

Protein Families: Transcription Factors

Product images:



Western blot analysis of MEF2A phosphorylation expression in PMA treated NIH-3T3 whole cell lysates, The lane on the left is treated with the antigen-specific peptide.