

Product datasheet for **TA325680**

MDM2 Rabbit Polyclonal Antibody

Product data:

Product Type:	Primary Antibodies
Applications:	WB
Recommended Dilution:	WB: 1:500-1:2000; IHC: 1:50-1:200; IF/ICC: 1:100-1:500
Reactivity:	Human, Mouse
Modifications:	Phospho-specific
Host:	Rabbit
Isotype:	IgG
Clonality:	Polyclonal
Immunogen:	The antiserum was produced against A synthesized peptide derived from human MDM2 around the phosphorylation site of Serine 166
Formulation:	Rabbit IgG in phosphate buffered saline , pH 7.4, 150mM NaCl, 0.02% sodium azide and 50% glycerol.
Concentration:	lot specific
Purification:	The antibody was affinity-purified from rabbit antiserum by affinity-chromatography using epitope-specific peptide.
Conjugation:	Unconjugated
Storage:	Store at -20°C as received.
Stability:	Stable for 12 months from date of receipt.
Predicted Protein Size:	55+90 kDa
Gene Name:	MDM2 proto-oncogene
Database Link:	NP_001138809 Entrez Gene 17246 Mouse Entrez Gene 4193 Human Q00987
Background:	This gene is a target gene of the transcription factor tumor protein p53. The encoded protein is a nuclear phosphoprotein that binds and inhibits transactivation by tumor protein p53, as part of an autoregulatory negative feedback loop.
Synonyms:	ACTFS; hdm2; HDMX

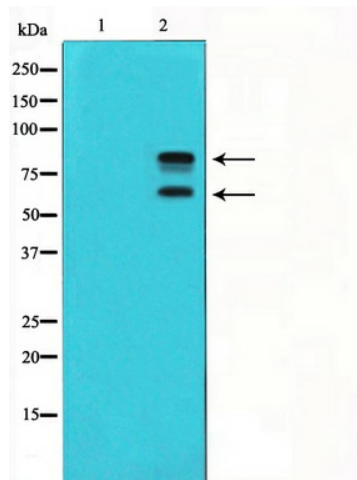


[View online »](#)

Protein Families: Druggable Genome, Transcription Factors

Protein Pathways: Bladder cancer, Cell cycle, Chronic myeloid leukemia, Endocytosis, Glioma, Melanoma, p53 signaling pathway, Pathways in cancer, Prostate cancer, Ubiquitin mediated proteolysis

Product images:



Western blot analysis of MDM2 phosphorylation expression in COS7 whole cell lysates, The lane on the left is treated with the antigen-specific peptide.