

Product datasheet for **TA325679**

MDM2 Rabbit Polyclonal Antibody

Product data:

Product Type:	Primary Antibodies
Applications:	WB
Recommended Dilution:	WB: 1:500-1:2000
Reactivity:	Human, Mouse
Host:	Rabbit
Isotype:	IgG
Clonality:	Polyclonal
Immunogen:	The antiserum was produced against a synthesized A synthesized peptide derived from human MDM2.
Formulation:	Rabbit IgG in phosphate buffered saline , pH 7.4, 150mM NaCl, 0.02% sodium azide and 50% glycerol.
Concentration:	lot specific
Purification:	The antibody was affinity-purified from rabbit antiserum by affinity-chromatography using epitope-specific peptide.
Conjugation:	Unconjugated
Storage:	Store at -20°C as received.
Stability:	Stable for 12 months from date of receipt.
Gene Name:	MDM2 proto-oncogene
Database Link:	NP_002383 Entrez Gene 17246 Mouse Entrez Gene 4193 Human Q00987
Background:	MDM2 a ubiquitin ligase for p53, plays a central role in regulation of the stability of p53 via Akt-mediated MDM2 phosphorylation. Phosphorylation of MDM2 increases its interaction with p300, providing a platform to allow the assembly of the protein complex necessary for MDM2-mediated ubiquitination and degradation of p53. Phosphorylation of MDM2 also blocks its binding to p19ARF, increasing the degradation of p53. Facilitates the nuclear export of p53 and targets it for proteasome-mediated proteolysis. Eight alternatively spliced isoforms have been reported.



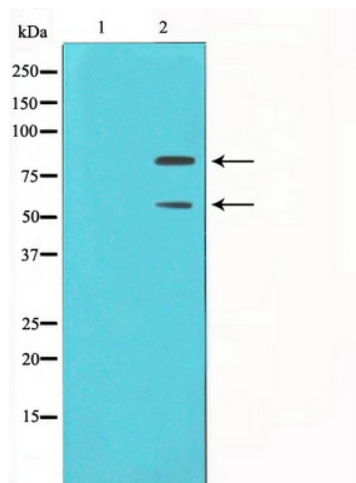
[View online »](#)

Synonyms: ACTFS; hdm2; HDMX

Protein Families: Druggable Genome, Transcription Factors

Protein Pathways: Bladder cancer, Cell cycle, Chronic myeloid leukemia, Endocytosis, Glioma, Melanoma, p53 signaling pathway, Pathways in cancer, Prostate cancer, Ubiquitin mediated proteolysis

Product images:



Western blot analysis on COS7 cell lysate using MDM2 Antibody