

Product datasheet for **TA325671**

Tau (MAPT) Rabbit Polyclonal Antibody

Product data:

Product Type:	Primary Antibodies
Applications:	WB
Recommended Dilution:	WB: 1:500-1:2000
Reactivity:	Human, Mouse, Rat
Modifications:	Phospho-specific
Host:	Rabbit
Isotype:	IgG
Clonality:	Polyclonal
Immunogen:	The antiserum was produced against A synthesized peptide derived from human Tau around the phosphorylation site of Serine 396
Formulation:	Rabbit IgG in phosphate buffered saline , pH 7.4, 150mM NaCl, 0.02% sodium azide and 50% glycerol.
Concentration:	lot specific
Purification:	The antibody was affinity-purified from rabbit antiserum by affinity-chromatography using epitope-specific peptide.
Conjugation:	Unconjugated
Storage:	Store at -20°C as received.
Stability:	Stable for 12 months from date of receipt.
Predicted Protein Size:	78 kDa
Gene Name:	microtubule associated protein tau
Database Link:	NP_001116538 Entrez Gene 17762 MouseEntrez Gene 29477 RatEntrez Gene 4137 Human P10636
Background:	This gene encodes the microtubule-associated protein tau (MAPT) whose transcript undergoes complex, regulated alternative splicing, giving rise to several mRNA species. MAPT transcripts are differentially expressed in the nervous system, depending on stage of neuronal maturation and neuron type.



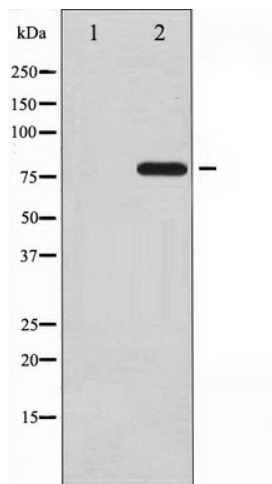
[View online »](#)

Synonyms: DDPAC; FTDP-17; MAPTL; MSTD; MTBT1; MTBT2; PPND; PPP1R103; TAU

Protein Families: Druggable Genome

Protein Pathways: Alzheimer's disease, MAPK signaling pathway

Product images:



Western blot analysis of Tau phosphorylation expression in HeLa whole cell lysates, The lane on the left is treated with the antigen-specific peptide.