

Product datasheet for **TA325662**

JNK1 (MAPK8) Rabbit Polyclonal Antibody

Product data:

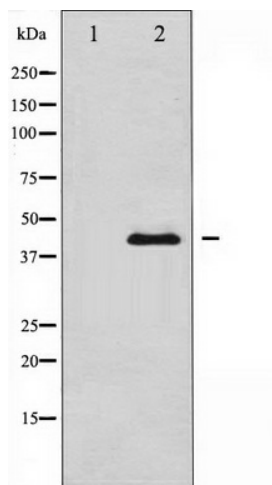
Product Type:	Primary Antibodies
Applications:	WB
Recommended Dilution:	WB: 1:500-1:2000; IHC: 1:50-1:200; IF/ICC: 1:100-1:500
Reactivity:	Human, Mouse, Rat
Host:	Rabbit
Isotype:	IgG
Clonality:	Polyclonal
Immunogen:	The antiserum was produced against A synthesized peptide derived from human SAPK/JNK
Formulation:	Rabbit IgG in phosphate buffered saline , pH 7.4, 150mM NaCl, 0.02% sodium azide and 50% glycerol.
Concentration:	lot specific
Purification:	The antibody was affinity-purified from rabbit antiserum by affinity-chromatography using epitope-specific peptide.
Conjugation:	Unconjugated
Storage:	Store at -20°C as received.
Stability:	Stable for 12 months from date of receipt.
Predicted Protein Size:	46,54 kDa
Gene Name:	mitogen-activated protein kinase 8
Database Link:	NP_620637 Entrez Gene 26419 Mouse Entrez Gene 116554 Rat Entrez Gene 5599 Human P45983
Background:	JNK3 a protein kinase of the MAPK family that is potently activated by a variety of environmental stress and pro-inflammatory cytokines. Brain-selective JNK isoform.
Synonyms:	2; JNK; JNK-46; JNK1; JNK1A2; JNK21B1; PRKM8; SAPK1; SAPK1c
Protein Families:	Druggable Genome, ES Cell Differentiation/IPS, Protein Kinase



[View online »](#)

Protein Pathways:

Adipocytokine signaling pathway, Colorectal cancer, Epithelial cell signaling in Helicobacter pylori infection, ErbB signaling pathway, Fc epsilon RI signaling pathway, Focal adhesion, GnRH signaling pathway, Insulin signaling pathway, MAPK signaling pathway, Neurotrophin signaling pathway, NOD-like receptor signaling pathway, Pancreatic cancer, Pathways in cancer, Progesterone-mediated oocyte maturation, RIG-I-like receptor signaling pathway, Toll-like receptor signaling pathway, Type II diabetes mellitus, Wnt signaling pathway

Product images:

Western blot analysis of SAPK/JNK expression in LOVO whole cell lysates. The lane on the left is treated with the antigen-specific peptide.