

## Product datasheet for **TA325651**

### MAP3K8 Rabbit Polyclonal Antibody

#### Product data:

Product Type:	Primary Antibodies
Applications:	WB
Recommended Dilution:	WB: 1:500-1:2000; IHC: 1:50-1:200; IF/ICC: 1:100-1:500
Reactivity:	Human, Mouse, Rat
Modifications:	Phospho-specific
Host:	Rabbit
Isotype:	IgG
Clonality:	Polyclonal
Immunogen:	The antiserum was produced against A synthesized peptide derived from human COT around the phosphorylation site of Threonine 290
Formulation:	Rabbit IgG in phosphate buffered saline , pH 7.4, 150mM NaCl, 0.02% sodium azide and 50% glycerol.
Concentration:	lot specific
Purification:	The antibody was affinity-purified from rabbit antiserum by affinity-chromatography using epitope-specific peptide.
Conjugation:	Unconjugated
Storage:	Store at -20°C as received.
Stability:	Stable for 12 months from date of receipt.
Predicted Protein Size:	60 kDa
Gene Name:	mitogen-activated protein kinase kinase kinase 8
Database Link:	<a href="#">NP_001231063</a> <a href="#">Entrez Gene 26410 MouseEntrez Gene 116596 RatEntrez Gene 1326 Human P41279</a>
Background:	This gene was identified by its oncogenic transforming activity in cells. The encoded protein is a member of the serine/threonine protein kinase family. This kinase can activate both the MAP kinase and JNK kinase pathways.
Synonyms:	AURA2; c-COT; COT; EST; ESTF; MEKK8; Tpl-2; TPL2

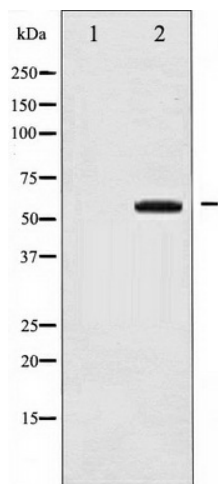


[View online »](#)

**Protein Families:** Druggable Genome, Protein Kinase

**Protein Pathways:** MAPK signaling pathway, T cell receptor signaling pathway, Toll-like receptor signaling pathway

**Product images:**



Western blot analysis of COT phosphorylation expression in UV treated 293 whole cell lysates, The lane on the left is treated with the antigen-specific peptide.