

Product datasheet for **TA325645**

ASK1 (MAP3K5) Rabbit Polyclonal Antibody

Product data:

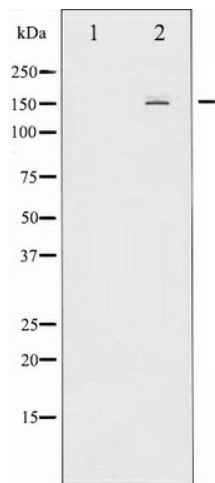
Product Type:	Primary Antibodies
Applications:	WB
Recommended Dilution:	WB: 1:500-1:2000; IHC: 1:50-1:200
Reactivity:	Human, Mouse, Rat
Host:	Rabbit
Isotype:	IgG
Clonality:	Polyclonal
Immunogen:	The antiserum was produced against A synthesized peptide derived from human ASK1
Formulation:	Rabbit IgG in phosphate buffered saline , pH 7.4, 150mM NaCl, 0.02% sodium azide and 50% glycerol.
Concentration:	lot specific
Purification:	The antibody was affinity-purified from rabbit antiserum by affinity-chromatography using epitope-specific peptide.
Conjugation:	Unconjugated
Storage:	Store at -20°C as received.
Stability:	Stable for 12 months from date of receipt.
Predicted Protein Size:	155 kDa
Gene Name:	mitogen-activated protein kinase kinase kinase 5
Database Link:	NP_005914 Entrez Gene 26408 Mouse Entrez Gene 365057 Rat Entrez Gene 4217 Human Q99683
Background:	Mitogen-activated protein kinase (MAPK) signaling cascades include MAPK or extracellular signal-regulated kinase (ERK), MAPK kinase (MKK or MEK), and MAPK kinase kinase (MAPKKK or MEKK). MAPKK kinase/MEKK phosphorylates and activates its downstream protein kinase, MAPK kinase/MEK, which in turn activates MAPK.
Synonyms:	ASK1; MAPKKK5; MEKK5
Protein Families:	Druggable Genome, Protein Kinase



[View online »](#)

Protein Pathways: Amyotrophic lateral sclerosis (ALS), MAPK signaling pathway, Neurotrophin signaling pathway

Product images:



Western blot analysis of ASK1 expression in RAW264.7 whole cell lysates, The lane on the left is treated with the antigen-specific peptide.