

## Product datasheet for **TA325642**

### MEK4 (MAP2K4) Rabbit Polyclonal Antibody

#### Product data:

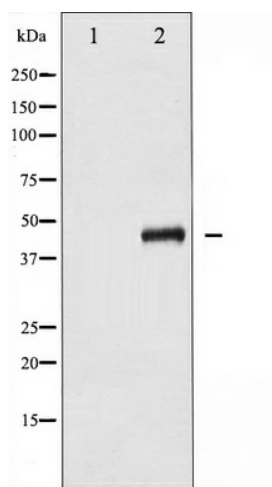
Product Type:	Primary Antibodies
Applications:	WB
Recommended Dilution:	WB: 1:500-1:2000; IHC: 1:50-1:200
Reactivity:	Human, Mouse, Rat
Modifications:	Phospho-specific
Host:	Rabbit
Isotype:	IgG
Clonality:	Polyclonal
Immunogen:	The antiserum was produced against A synthesized peptide derived from human SEK1/MKK4 around the phosphorylation site of Serine 80
Formulation:	Rabbit IgG in phosphate buffered saline , pH 7.4, 150mM NaCl, 0.02% sodium azide and 50% glycerol.
Concentration:	lot specific
Purification:	The antibody was affinity-purified from rabbit antiserum by affinity-chromatography using epitope-specific peptide.
Conjugation:	Unconjugated
Storage:	Store at -20°C as received.
Stability:	Stable for 12 months from date of receipt.
Predicted Protein Size:	44 kDa
Gene Name:	mitogen-activated protein kinase kinase 4
Database Link:	<a href="#">NP_003001</a> <a href="#">Entrez Gene 26398 MouseEntrez Gene 287398 RatEntrez Gene 6416 Human P45985</a>
Background:	MKK4 dual specificity kinase of the STE7 family that phosphorylates and activates JNK1 and -2 as well as p38 but not ERK1 or -2. Mediates cellular responses to various cellular stresses and inflammatory cytokines. Phosphorylation by Akt inhibits MKK4 and suppresses stress-activated signal transduction.



[View online »](#)

<b>Synonyms:</b>	JNKK; JNKK1; MAPKK4; MEK4; MKK4; PRKMK4; SAPKK-1; SAPKK1; SEK1; SERK1; SKK1
<b>Protein Families:</b>	Druggable Genome, Protein Kinase
<b>Protein Pathways:</b>	Epithelial cell signaling in Helicobacter pylori infection, ErbB signaling pathway, Fc epsilon RI signaling pathway, GnRH signaling pathway, MAPK signaling pathway, Toll-like receptor signaling pathway

### Product images:



Western blot analysis of SEK1/MKK4 phosphorylation expression in NIH-3T3 whole cell lysates. The lane on the left is treated with the antigen-specific peptide.