

Product datasheet for **TA325631**

LYN Rabbit Polyclonal Antibody

Product data:

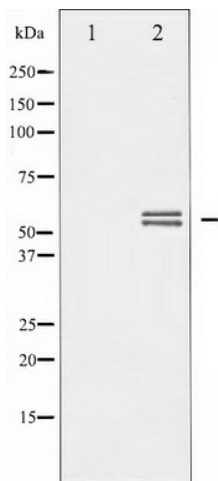
Product Type:	Primary Antibodies
Applications:	WB
Recommended Dilution:	WB: 1:500-1:2000; IHC: 1:50-1:200
Reactivity:	Human, Mouse, Rat
Modifications:	Phospho-specific
Host:	Rabbit
Isotype:	IgG
Clonality:	Polyclonal
Immunogen:	The antiserum was produced against A synthesized peptide derived from human Lyn around the phosphorylation site of Tyrosine 507
Formulation:	Rabbit IgG in phosphate buffered saline , pH 7.4, 150mM NaCl, 0.02% sodium azide and 50% glycerol.
Concentration:	lot specific
Purification:	The antibody was affinity-purified from rabbit antiserum by affinity-chromatography using epitope-specific peptide.
Conjugation:	Unconjugated
Storage:	Store at -20°C as received.
Stability:	Stable for 12 months from date of receipt.
Predicted Protein Size:	53,56 kDa
Gene Name:	LYN proto-oncogene, Src family tyrosine kinase
Database Link:	NP_001104567 Entrez Gene 17096 MouseEntrez Gene 81515 RatEntrez Gene 4067 Human P07948
Background:	Lyn a tyrosine kinase of the Src family that plays a role in B cell antigen-receptor signaling.
Synonyms:	JTK8; p53Lyn; p56Lyn
Protein Families:	Druggable Genome, Protein Kinase



[View online »](#)

Protein Pathways: B cell receptor signaling pathway, Chemokine signaling pathway, Epithelial cell signaling in Helicobacter pylori infection, Fc epsilon RI signaling pathway, Fc gamma R-mediated phagocytosis, Long-term depression

Product images:



Western blot analysis of Lyn phosphorylation expression in H₂O₂ treated K562 whole cell lysates, The lane on the left is treated with the antigen-specific peptide.