

## Product datasheet for **TA325630**

### LYN Rabbit Polyclonal Antibody

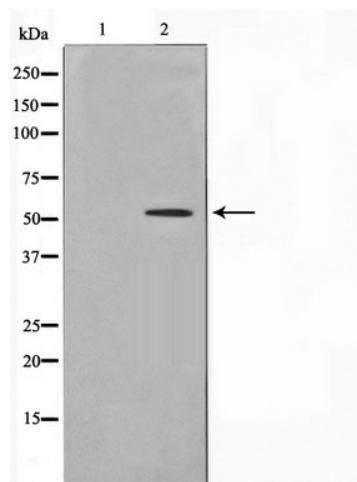
#### Product data:

Product Type:	Primary Antibodies
Applications:	WB
Recommended Dilution:	WB: 1:500-1:2000; IHC: 1:50-1:200
Reactivity:	Human, Mouse, Rat
Host:	Rabbit
Isotype:	IgG
Clonality:	Polyclonal
Immunogen:	The antiserum was produced against A synthesized peptide derived from human Lyn
Formulation:	Rabbit IgG in phosphate buffered saline , pH 7.4, 150mM NaCl, 0.02% sodium azide and 50% glycerol.
Concentration:	lot specific
Purification:	The antibody was affinity-purified from rabbit antiserum by affinity-chromatography using epitope-specific peptide.
Conjugation:	Unconjugated
Storage:	Store at -20°C as received.
Stability:	Stable for 12 months from date of receipt.
Predicted Protein Size:	53,56 kDa
Gene Name:	LYN proto-oncogene, Src family tyrosine kinase
Database Link:	<a href="#">NP_001104567</a> <a href="#">Entrez Gene 17096 Mouse</a> <a href="#">Entrez Gene 81515 Rat</a> <a href="#">Entrez Gene 4067 Human</a> <a href="#">P07948</a>
Background:	Lyn a tyrosine kinase of the Src family that plays a role in B cell antigen-receptor signaling.
Synonyms:	JTK8; p53Lyn; p56Lyn
Protein Families:	Druggable Genome, Protein Kinase
Protein Pathways:	B cell receptor signaling pathway, Chemokine signaling pathway, Epithelial cell signaling in Helicobacter pylori infection, Fc epsilon RI signaling pathway, Fc gamma R-mediated phagocytosis, Long-term depression



[View online »](#)

## Product images:



Western blot analysis of Lyn expression in H<sub>2</sub>O<sub>2</sub> treated K562 whole cell lysates, The lane on the left is treated with the antigen-specific peptide.