

Product datasheet for **TA325627**

Hormone sensitive lipase (LIPE) Rabbit Polyclonal Antibody

Product data:

Product Type:	Primary Antibodies
Applications:	WB
Recommended Dilution:	WB: 1:500-1:2000; IHC: 1:50-1:200
Reactivity:	Human, Mouse, Rat
Modifications:	Phospho-specific
Host:	Rabbit
Isotype:	IgG
Clonality:	Polyclonal
Immunogen:	The antiserum was produced against A synthesized peptide derived from human HSL around the phosphorylation site of Serine 855/554
Formulation:	Rabbit IgG in phosphate buffered saline , pH 7.4, 150mM NaCl, 0.02% sodium azide and 50% glycerol.
Concentration:	lot specific
Purification:	The antibody was affinity-purified from rabbit antiserum by affinity-chromatography using epitope-specific peptide.
Conjugation:	Unconjugated
Storage:	Store at -20°C as received.
Stability:	Stable for 12 months from date of receipt.
Predicted Protein Size:	81+83 kDa
Gene Name:	lipase E, hormone sensitive type
Database Link:	NP_005348 Entrez Gene 16890 MouseEntrez Gene 25330 RatEntrez Gene 3991 Human Q05469
Background:	hormone sensitive lipase is a lipolytic enzyme of the 'GDXG' family. Plays a rate limiting step in triglyceride lipolysis. In adipose tissue and heart, it primarily hydrolyzes stored triglycerides to free fatty acids, while in steroidogenic tissues, it principally converts cholesteryl esters to free cholesterol for steroid hormone production.

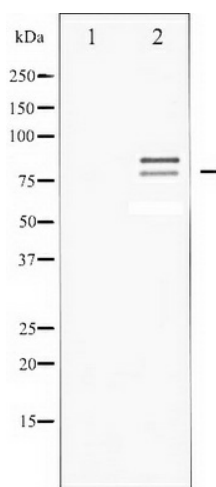


[View online »](#)

Synonyms: AOMS4; FPLD6; HSL; LHS

Protein Pathways: Insulin signaling pathway

Product images:



Western blot analysis of HSL phosphorylation expression in Adriamycin treated HeLa whole cell lysates, The lane on the left is treated with the antigen-specific peptide.