

## Product datasheet for **TA325625**

### Hormone sensitive lipase (LIPE) Rabbit Polyclonal Antibody

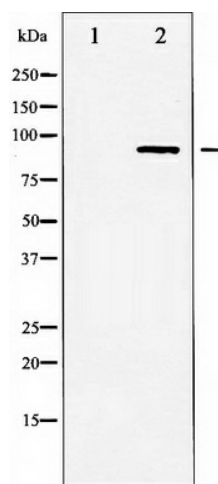
#### Product data:

Product Type:	Primary Antibodies
Applications:	WB
Recommended Dilution:	WB: 1:500-1:2000; IHC: 1:50-1:200
Reactivity:	Human, Mouse, Rat
Host:	Rabbit
Isotype:	IgG
Clonality:	Polyclonal
Immunogen:	The antiserum was produced against A synthesized peptide derived from human HSL
Formulation:	Rabbit IgG in phosphate buffered saline , pH 7.4, 150mM NaCl, 0.02% sodium azide and 50% glycerol.
Concentration:	lot specific
Purification:	The antibody was affinity-purified from rabbit antiserum by affinity-chromatography using epitope-specific peptide.
Conjugation:	Unconjugated
Storage:	Store at -20°C as received.
Stability:	Stable for 12 months from date of receipt.
Predicted Protein Size:	85 kDa
Gene Name:	lipase E, hormone sensitive type
Database Link:	<a href="#">NP_005348</a> <a href="#">Entrez Gene 16890 Mouse</a> <a href="#">Entrez Gene 25330 Rat</a> <a href="#">Entrez Gene 3991 Human</a> <a href="#">Q05469</a>
Background:	hormone sensitive lipase is a lipolytic enzyme of the 'GDXG' family. Plays a rate limiting step in triglyceride lipolysis. In adipose tissue and heart, it primarily hydrolyzes stored triglycerides to free fatty acids, while in steroidogenic tissues, it principally converts cholesteryl esters to free cholesterol for steroid hormone production.
Synonyms:	AOMS4; FPLD6; HSL; LHS
Protein Pathways:	Insulin signaling pathway



[View online »](#)

## Product images:



Western blot analysis of HSL expression in Jurkat whole cell lysates, The lane on the left is treated with the antigen-specific peptide.