

Product datasheet for **TA325616**

LCK Rabbit Polyclonal Antibody

Product data:

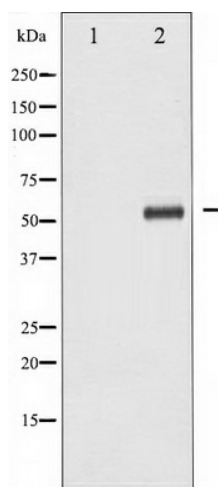
Product Type:	Primary Antibodies
Applications:	WB
Recommended Dilution:	WB: 1:500-1:2000; IF/ICC: 1:100-1:500
Reactivity:	Human, Mouse, Rat
Modifications:	Phospho-specific
Host:	Rabbit
Isotype:	IgG
Clonality:	Polyclonal
Immunogen:	The antiserum was produced against A synthesized peptide derived from human Lck around the phosphorylation site of Tyrosine 393
Formulation:	Rabbit IgG in phosphate buffered saline , pH 7.4, 150mM NaCl, 0.02% sodium azide and 50% glycerol.
Concentration:	lot specific
Purification:	The antibody was affinity-purified from rabbit antiserum by affinity-chromatography using epitope-specific peptide.
Conjugation:	Unconjugated
Storage:	Store at -20°C as received.
Stability:	Stable for 12 months from date of receipt.
Predicted Protein Size:	56 kDa
Gene Name:	LCK proto-oncogene, Src family tyrosine kinase
Database Link:	NP_001036236 Entrez Gene 16818 MouseEntrez Gene 313050 RatEntrez Gene 3932 Human P06239
Background:	Tyrosine kinase that plays an essential role for the selection and maturation of developing t-cell in the thymus and in mature t-cell function.
Synonyms:	IMD22; LSK; p56lck; pp58lck; YT16
Protein Families:	Druggable Genome, Protein Kinase, Stem cell - Pluripotency



[View online »](#)

Protein Pathways: Natural killer cell mediated cytotoxicity, Primary immunodeficiency, T cell receptor signaling pathway

Product images:



Western blot analysis of Lck phosphorylation expression in HeLa whole cell lysates, The lane on the left is treated with the antigen-specific peptide.