

## Product datasheet for **TA325608**

### VEGF Receptor 2 (KDR) Rabbit Polyclonal Antibody

#### Product data:

Product Type:	Primary Antibodies
Applications:	WB
Recommended Dilution:	WB: 1:500-1:2000; IHC: 1:50-1:200
Reactivity:	Human, Mouse, Rat
Modifications:	Phospho-specific
Host:	Rabbit
Isotype:	IgG
Clonality:	Polyclonal
Immunogen:	The antiserum was produced against A synthesized peptide derived from human VEGFR2 around the phosphorylation site of Tyrosine 1214
Formulation:	Rabbit IgG in phosphate buffered saline , pH 7.4, 150mM NaCl, 0.02% sodium azide and 50% glycerol.
Concentration:	lot specific
Purification:	The antibody was affinity-purified from rabbit antiserum by affinity-chromatography using epitope-specific peptide.
Conjugation:	Unconjugated
Storage:	Store at -20°C as received.
Stability:	Stable for 12 months from date of receipt.
Predicted Protein Size:	152 kDa
Gene Name:	kinase insert domain receptor
Database Link:	<a href="#">NP_002244</a> <a href="#">Entrez Gene 16542 MouseEntrez Gene 25589 RatEntrez Gene 3791 Human P35968</a>
Background:	VEGFR-2 is a receptor tyrosine kinase of the VEGFR family. High affinity receptor for VEGF and VEGF-C. Ligand binding induces autophosphorylation and activation. Activated receptor recruits proteins including Shc, GRB2, PI3K, Nck, SHP-1 and SHP-2.
Synonyms:	CD309; FLK1; VEGFR; VEGFR2

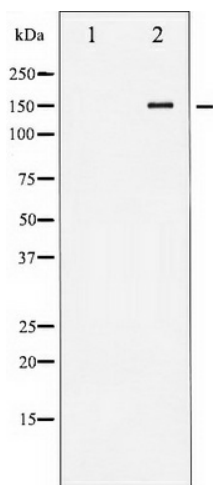


[View online »](#)

**Protein Families:** Druggable Genome, ES Cell Differentiation/IPS, Protein Kinase, Transmembrane

**Protein Pathways:** Cytokine-cytokine receptor interaction, Endocytosis, Focal adhesion, VEGF signaling pathway

**Product images:**



Western blot analysis of VEGFR2 phosphorylation expression in Na<sub>3</sub>VO<sub>4</sub> treated HepG2 whole cell lysates, The lane on the left is treated with the antigen-specific peptide.