

## Product datasheet for **TA325604**

### KAT2B Rabbit Polyclonal Antibody

#### Product data:

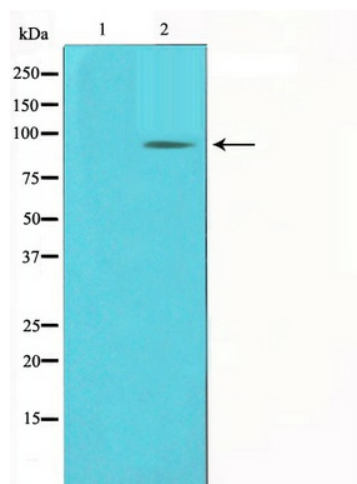
Product Type:	Primary Antibodies
Applications:	WB
Recommended Dilution:	WB: 1:500-1:2000
Reactivity:	Human, Mouse, Rat
Host:	Rabbit
Isotype:	IgG
Clonality:	Polyclonal
Immunogen:	The antiserum was produced against a synthesized A synthesized peptide derived from human PCAF.
Formulation:	Rabbit IgG in phosphate buffered saline , pH 7.4, 150mM NaCl, 0.02% sodium azide and 50% glycerol.
Concentration:	lot specific
Purification:	The antibody was affinity-purified from rabbit antiserum by affinity-chromatography using epitope-specific peptide.
Conjugation:	Unconjugated
Storage:	Store at -20°C as received.
Stability:	Stable for 12 months from date of receipt.
Gene Name:	lysine acetyltransferase 2B
Database Link:	<a href="#">NP_003875</a> <a href="#">Entrez Gene 18519 MouseEntrez Gene 301164 RatEntrez Gene 8850 Human Q92831</a>
Background:	PCAF Functions as a histone acetyltransferase (HAT) to promote transcriptional activation. Has significant histone acetyltransferase activity with core histones (H3 and H4), and also with nucleosome core particles. Inhibits cell-cycle progression and counteracts the mitogenic activity of the adenoviral oncoprotein E1A. In case of HIV-1 infection, it is recruited by the viral protein Tat
Synonyms:	CAF; P; PCAF
Protein Families:	Druggable Genome, Transcription Factors



[View online »](#)

Protein Pathways: Notch signaling pathway

**Product images:**



Western blot analysis on COLO205 cell lysate using PCAF Antibody