

## Product datasheet for **TA325602**

### JUND Rabbit Polyclonal Antibody

#### Product data:

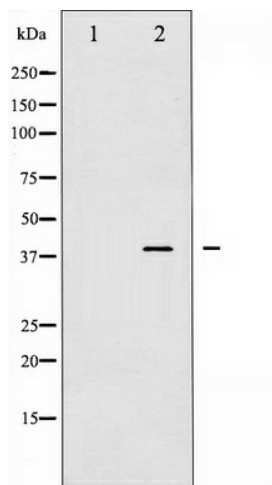
|                         |  |
|-------------------------|--|
| Product Type:           | Primary Antibodies   |
| Applications:           | WB   |
| Recommended Dilution:   | WB: 1:500-1:2000; IHC: 1:50-1:200; IP  |
| Reactivity:             | Human, Mouse, Rat  |
| Modifications:          | Phospho-specific   |
| Host:                   | Rabbit   |
| Isotype:                | IgG  |
| Clonality:              | Polyclonal   |
| Immunogen:              | The antiserum was produced against A synthesized peptide derived from human JunD around the phosphorylation site of Serine 255   |
| Formulation:            | Rabbit IgG in phosphate buffered saline , pH 7.4, 150mM NaCl, 0.02% sodium azide and 50% glycerol.   |
| Concentration:          | lot specific   |
| Purification:           | The antibody was affinity-purified from rabbit antiserum by affinity-chromatography using epitope-specific peptide.  |
| Conjugation:            | Unconjugated   |
| Storage:                | Store at -20°C as received.  |
| Stability:              | Stable for 12 months from date of receipt.   |
| Predicted Protein Size: | 38 kDa   |
| Gene Name:              | JunD proto-oncogene, AP-1 transcription factor subunit   |
| Database Link:          | <a href="#">NP_005345</a><br><a href="#">Entrez Gene 16478 MouseEntrez Gene 24518 RatEntrez Gene 3727 Human P17535</a>   |
| Background:             | JunD Transcription factor binding AP-1 sites. Binds DNA as a dimer. Interacts with MEN1; this interaction represses transcriptional activation. Belongs to the bZIP family. Jun subfamily. |
| Synonyms:               | AP-1   |
| Protein Families:       | Druggable Genome, Transcription Factors  |



[View online »](#)

Protein Pathways: MAPK signaling pathway

### Product images:



Western blot analysis of JunD phosphorylation expression in 293 whole cell lysates, The lane on the left is treated with the antigen-specific peptide.