

## Product datasheet for **TA325601**

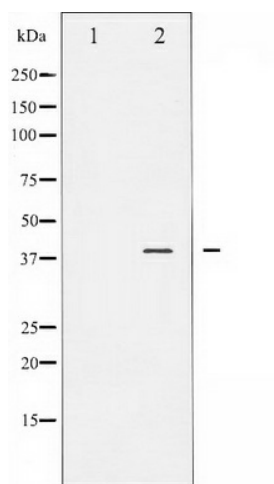
### JUNB Rabbit Polyclonal Antibody

#### Product data:

Product Type:	Primary Antibodies
Applications:	WB
Recommended Dilution:	WB: 1:500-1:2000; IHC: 1:50-1:200; IP
Reactivity:	Human, Mouse, Rat
Modifications:	Phospho-specific
Host:	Rabbit
Isotype:	IgG
Clonality:	Polyclonal
Immunogen:	The antiserum was produced against A synthesized peptide derived from human JunB around the phosphorylation site of Serine 259
Formulation:	Rabbit IgG in phosphate buffered saline , pH 7.4, 150mM NaCl, 0.02% sodium azide and 50% glycerol.
Concentration:	lot specific
Purification:	The antibody was affinity-purified from rabbit antiserum by affinity-chromatography using epitope-specific peptide.
Conjugation:	Unconjugated
Storage:	Store at -20°C as received.
Stability:	Stable for 12 months from date of receipt.
Predicted Protein Size:	38 kDa
Gene Name:	JunB proto-oncogene, AP-1 transcription factor subunit
Database Link:	<a href="#">NP_002220</a> <a href="#">Entrez Gene 16477 Mouse</a> <a href="#">Entrez Gene 24517 Rat</a> <a href="#">Entrez Gene 3726 Human</a> <a href="#">P17275</a>
Background:	JunB Transcription factor involved in regulating gene activity following the primary growth factor response. Binds to the DNA sequence 5'-TGA[CG]TCA-3'.
Synonyms:	AP-1
Protein Families:	Druggable Genome, Transcription Factors



[View online »](#)

**Product images:**

Western blot analysis of JunB phosphorylation expression in HeLa whole cell lysates, The lane on the left is treated with the antigen-specific peptide.