

## Product datasheet for **TA325587**

### JAK2 Rabbit Polyclonal Antibody

#### Product data:

|                         |  |
|-------------------------|--|
| Product Type:           | Primary Antibodies   |
| Applications:           | WB   |
| Recommended Dilution:   | WB: 1:500-1:2000   |
| Reactivity:             | Human, Mouse, Rat  |
| Modifications:          | Phospho-specific   |
| Host:                   | Rabbit   |
| Isotype:                | IgG  |
| Clonality:              | Polyclonal   |
| Immunogen:              | The antiserum was produced against A synthesized peptide derived from human JAK2 around the phosphorylation site of Tyrosine 570   |
| Formulation:            | Rabbit IgG in phosphate buffered saline , pH 7.4, 150mM NaCl, 0.02% sodium azide and 50% glycerol.   |
| Concentration:          | lot specific   |
| Purification:           | The antibody was affinity-purified from rabbit antiserum by affinity-chromatography using epitope-specific peptide.  |
| Conjugation:            | Unconjugated   |
| Storage:                | Store at -20°C as received.  |
| Stability:              | Stable for 12 months from date of receipt.   |
| Predicted Protein Size: | 125 kDa  |
| Gene Name:              | Janus kinase 2   |
| Database Link:          | <a href="#">NP_004963</a><br><a href="#">Entrez Gene 16452 MouseEntrez Gene 24514 RatEntrez Gene 3717 Human O60674</a>   |
| Background:             | This gene product is a protein tyrosine kinase involved in a specific subset of cytokine receptor signaling pathways. It has been found to be constitutively associated with the prolactin receptor and is required for responses to gamma interferon. |
| Synonyms:               | JTK10; THCYT3  |

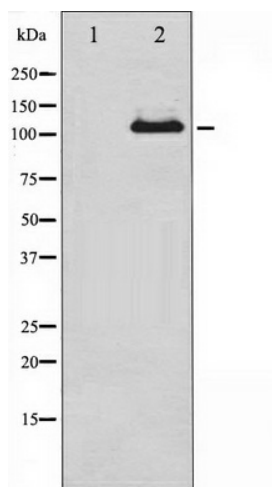


[View online »](#)

**Protein Families:** Druggable Genome, Protein Kinase

**Protein Pathways:** Adipocytokine signaling pathway, Chemokine signaling pathway, Jak-STAT signaling pathway

**Product images:**



Western blot analysis of JAK2 phosphorylation expression in etoposide treated 293 whole cell lysates, The lane on the left is treated with the antigen-specific peptide.