

Product datasheet for **TA325584**

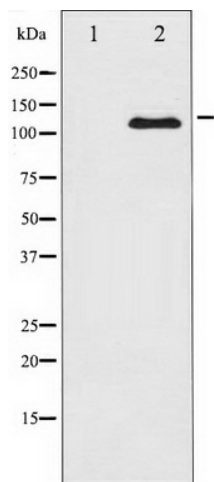
JAK2 Rabbit Polyclonal Antibody

Product data:

Product Type:	Primary Antibodies
Applications:	WB
Recommended Dilution:	WB: 1:500-1:2000; IHC: 1:50-1:200
Reactivity:	Human, Mouse, Rat
Host:	Rabbit
Isotype:	IgG
Clonality:	Polyclonal
Immunogen:	The antiserum was produced against A synthesized peptide derived from human JAK2
Formulation:	Rabbit IgG in phosphate buffered saline , pH 7.4, 150mM NaCl, 0.02% sodium azide and 50% glycerol.
Concentration:	lot specific
Purification:	The antibody was affinity-purified from rabbit antiserum by affinity-chromatography using epitope-specific peptide.
Conjugation:	Unconjugated
Storage:	Store at -20°C as received.
Stability:	Stable for 12 months from date of receipt.
Predicted Protein Size:	125 kDa
Gene Name:	Janus kinase 2
Database Link:	NP_004963 Entrez Gene 16452 Mouse Entrez Gene 24514 Rat Entrez Gene 3717 Human O60674
Background:	This gene product is a protein tyrosine kinase involved in a specific subset of cytokine receptor signaling pathways. It has been found to be constitutively associated with the prolactin receptor and is required for responses to gamma interferon.
Synonyms:	JTK10; THCYT3
Protein Families:	Druggable Genome, Protein Kinase
Protein Pathways:	Adipocytokine signaling pathway, Chemokine signaling pathway, Jak-STAT signaling pathway



[View online »](#)

Product images:

Western blot analysis of JAK2 expression in K562 whole cell lysates, The lane on the left is treated with the antigen-specific peptide.