

## Product datasheet for **TA325581**

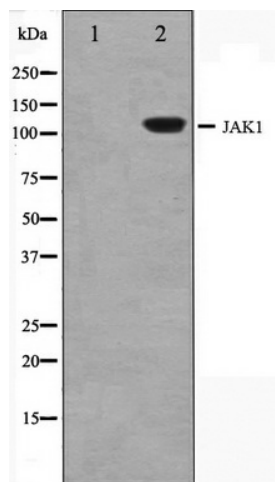
### JAK1 Rabbit Polyclonal Antibody

#### Product data:

Product Type:	Primary Antibodies
Applications:	WB
Recommended Dilution:	WB: 1:500-1:2000; IHC: 1:50-1:200
Reactivity:	Human, Mouse, Rat
Host:	Rabbit
Isotype:	IgG
Clonality:	Polyclonal
Immunogen:	The antiserum was produced against A synthesized peptide derived from human JAK1
Formulation:	Rabbit IgG in phosphate buffered saline , pH 7.4, 150mM NaCl, 0.02% sodium azide and 50% glycerol.
Concentration:	lot specific
Purification:	The antibody was affinity-purified from rabbit antiserum by affinity-chromatography using epitope-specific peptide.
Conjugation:	Unconjugated
Storage:	Store at -20°C as received.
Stability:	Stable for 12 months from date of receipt.
Predicted Protein Size:	130 kDa
Gene Name:	Janus kinase 1
Database Link:	<a href="#">NP_002218</a> <a href="#">Entrez Gene 16451 Mouse</a> <a href="#">Entrez Gene 84598 Rat</a> <a href="#">Entrez Gene 3716 Human</a> <a href="#">P23458</a>
Background:	Janus kinase 1 (JAK1), is a member of a new class of protein-tyrosine kinases (PTK) characterized by the presence of a second phosphotransferase-related domain immediately N-terminal to the PTK domain.
Synonyms:	JAK1A; JAK1B; JTK3
Protein Families:	Druggable Genome, Protein Kinase
Protein Pathways:	Jak-STAT signaling pathway, Pancreatic cancer, Pathways in cancer



[View online »](#)

**Product images:**

Western blot analysis of JAK1 expression in EGF treated MCF7 whole cell lysates, The lane on the left is treated with the antigen-specific peptide.