

## Product datasheet for **TA325570**

### IRF3 Rabbit Polyclonal Antibody

#### Product data:

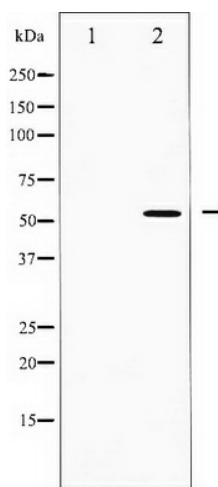
Product Type:	Primary Antibodies
Applications:	WB
Recommended Dilution:	WB: 1:500-1:2000; IHC: 1:50-1:200; IF/ICC: 1:100-1:500
Reactivity:	Human
Host:	Rabbit
Isotype:	IgG
Clonality:	Polyclonal
Immunogen:	The antiserum was produced against A synthesized peptide derived from human IRF3
Formulation:	Rabbit IgG in phosphate buffered saline , pH 7.4, 150mM NaCl, 0.02% sodium azide and 50% glycerol.
Concentration:	lot specific
Purification:	The antibody was affinity-purified from rabbit antiserum by affinity-chromatography using epitope-specific peptide.
Conjugation:	Unconjugated
Storage:	Store at -20°C as received.
Stability:	Stable for 12 months from date of receipt.
Predicted Protein Size:	57 kDa
Gene Name:	interferon regulatory factor 3
Database Link:	<a href="#">NP_001562</a> <a href="#">Entrez Gene 3661 Human</a> <a href="#">Q14653</a>
Background:	IRF3 encodes interferon regulatory factor 3, a member of the interferon regulatory transcription factor (IRF) family. IRF3 is found in an inactive cytoplasmic form that upon serine/threonine phosphorylation forms a complex with CREBBP.
Synonyms:	interferon regulatory factor 3; MGC94729
Protein Families:	Druggable Genome, Transcription Factors



[View online »](#)

**Protein Pathways:** Cytosolic DNA-sensing pathway, RIG-I-like receptor signaling pathway, Toll-like receptor signaling pathway

**Product images:**



Western blot analysis of IRF3 expression in K562 whole cell lysates. The lane on the left is treated with the antigen-specific peptide.